

Complimentary Issue

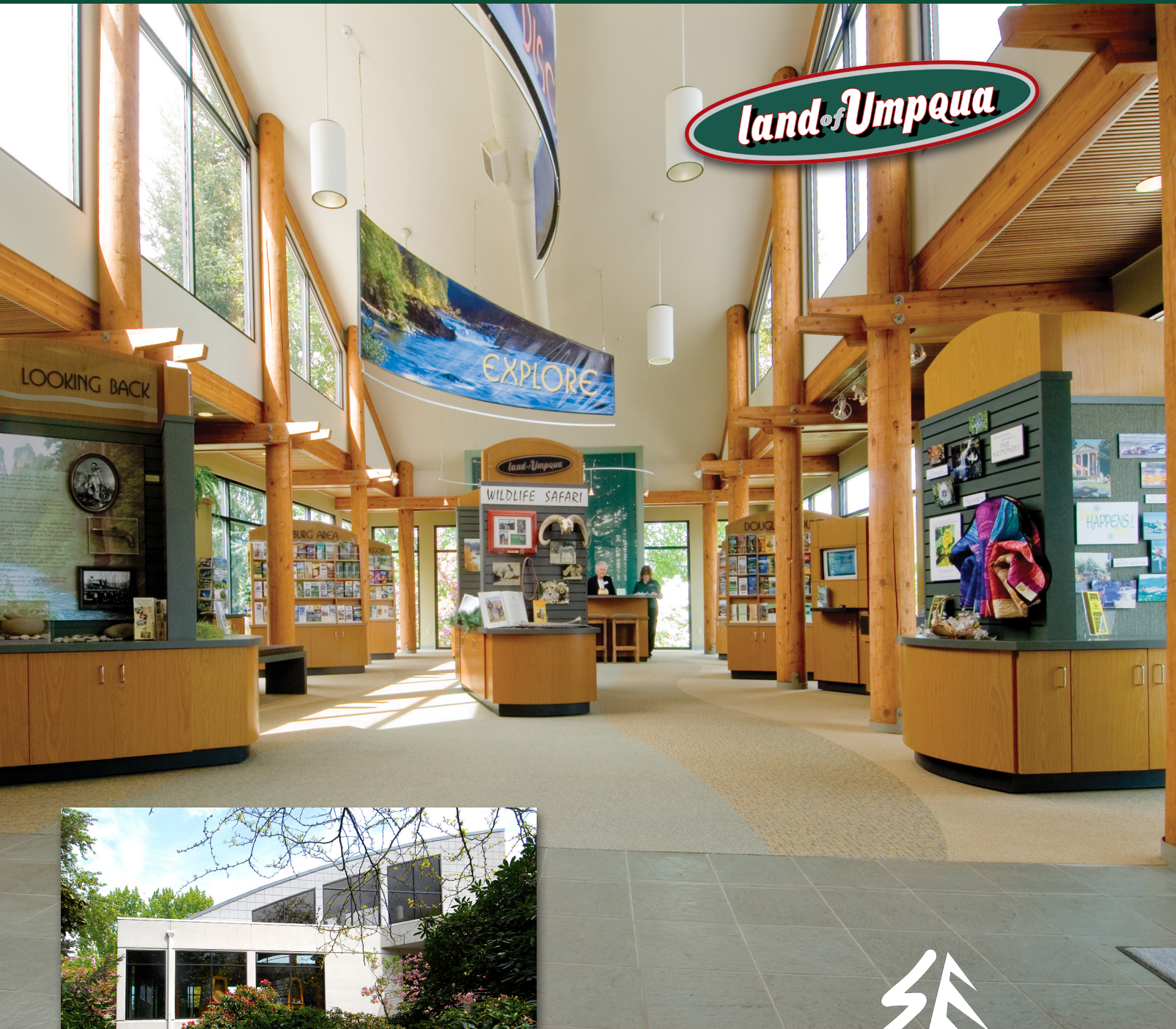
in the land of umpqua



A Business Directory, Community Profile & Visitor Magazine
from the Roseburg Area Chamber of Commerce



For more information about the Land of Umpqua visit the
Roseburg Area Chamber of Commerce & Visitor Center



541.672.2648

410 SE SPRUCE STREET, ROSEBURG, OR 97470

WWW.ROSEBURGCHAMBER.COM



**ROSEBURG
AREA** Chamber of
Commerce
& Visitor Center

CONTENTS

WELCOME

- 3 Chamber Leadership
- 4 2022 Goals & Priorities
- 5 2021 Activities & Accomplishments

LAND OF UMPQUA

- 6 Land of Umpqua Adventures
- 10 Wildlife Safari
- 11 Covered Bridges
- 12 Oregon Coast
- 13 Winter Recreation
- 14 Parks & Resorts
- 16 Five Days in the Land of Umpqua
- 18 Arts, Culture & Entertainment
- 19 Wineries

AROUND ROSEBURG

- 20 Events
- 21 Lodging Accommodations

ROSEBURG BUSINESS

- 22 Roseburg Industries
- 23 Business Assistance
- 24 Business Listings (Alphabetical)
- 31 Business Listings (By Category)

COMMUNITY PROFILE

- 36 Community Profile
- 39 History of Roseburg

VISITOR MAPS

- 40 Land of Umpqua Map
- 42 North Umpqua Trail Map
- 44 Roseburg Walking / Biking Map



PRODUCED BY Roseburg Area Chamber of Commerce | PO Box 1026 | Roseburg, OR 97470 | 541.672.2648 | www.roseburgchamber.com
Content and images from previous vendors and members, all content currently owned by the Roseburg Area Chamber of Commerce.
Roseburg Area Chamber of Commerce would like to thank the membership for its support of this publication.

Copyright 2022 by Roseburg Area Chamber of Commerce. All rights reserved. Reproduction in whole or part without the written permission of the Roseburg Area Chamber of Commerce is prohibited.

WELCOME!

Roseburg Oregon *in the heart of the*

THE
VISITOR CENTER

ROSEBURG AREA
CHAMBER OF COMMERCE



Roseburg is the heart of the scenic and recreational paradise known as the Land of Umpqua. This land of authentic outdoor adventures and experiences is bordered by picturesque rivers and lush valleys. The Roseburg area is known for its 359 miles of streams along the north and south forks of the Umpqua River. The year-round natural beauty of the Land of Umpqua contributes to a quality lifestyle enjoyed by residents and appreciated by guests to our area.

The Roseburg area reflects small-town values, has dedicated business leaders and a strong education system from K-12 to our local community college. Our community possesses a hardworking, well-trained workforce. These characteristics have proved instrumental in drawing new residents and companies to the region, while keeping families here for generations.

Stroll through our historic downtown with unique shops and galleries and outstanding restaurants and brewpubs, or venture out into the surrounding wine country. Our more than two dozen boutique wineries are receiving international acclaim for a diverse array of wines including Tempranillo, Pinot Gris, Baco Noir, Pinot Noir, Riesling and exotic blends to name a few.

At Wildlife Safari you can get up close and personal with wild animals roaming free. If you'd rather wrestle a steelhead than a bear (and who says you can't do both?), tackle the famous North Umpqua River. It holds steelhead, trout, salmon, bass and as much adventure as you could hope for in one river. And, let's not forget the opportunity for world-class gaming at Seven Feathers Casino Resort & Spa.

Roseburg is only a little more than an hour from where the Pacific Ocean rushes to the beaches of the beautiful Oregon Coast. Or travel the scenic North Umpqua Highway to Crater Lake National Park, one of the most breathtaking sights in America. You can stop at dozens of waterfalls along the way.

If you're a hiker or mountain biker, travel the same route and test the North Umpqua Trail system, one of the top 30 rides

in the world. Our outdoor opportunities—from fishing, rafting, hiking, biking to cycling—when combined with our unique visitor attractions, wineries and breweries, make the Land of Umpqua a perfect destination for visitors.

As this region's leading advocate for business, the Roseburg Area Chamber of Commerce works with our business and community partners to create a strong local economy, promote our local businesses, promote the Land of Umpqua as a premier visitor destination and represent business interests through political activity.

The chamber's political advocacy is founded in making certain our community maintains the most business-friendly environment possible for private-sector growth and job creation. Work is always ongoing to provide shovel-ready sites for business development—manufacturing, industrial and commercial—ensuring infrastructure is in place for future growth. The chamber plays an important role in attracting new business and expanding existing business in the Land of Umpqua for family-wage job creation. The chamber continues to advocate for investment in waterfront enhancement, revitalization of historic downtown Roseburg and transportation infrastructure. Much is progressing in these areas today.

All this, and more, is happening in Roseburg. It's all here for you in the Land of Umpqua. Whether you are visiting us for the first time or hundredth, recently relocated or considering Roseburg as the perfect location for your business or retirement, or are a sixth generation resident like me, the Land of Umpqua is truly the best place to live, work and play.

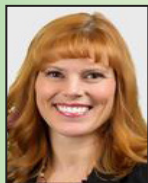
All are welcome here.

Debbie Fromdahl, President & CEO
*Roseburg Area Chamber of Commerce
& Visitor Center*



PO Box 1026 | 410 SE Spruce Street
Roseburg, OR 97470
www.roseburgchamber.com

2022 OFFICERS/BOARD MEMBERS



Tammy Turner
Chair

Community Cancer Center



Gabe Crane
Vice Chair

Roseburg Forest Products



Sam Carter
Treasurer

Pacific Power



Debbie Fromdahl
President & CEO

*Roseburg Area
Chamber of Commerce*



Allen Pike
Immediate Past Chair

Hampton Inn & Suites

Donna Arnold
Cardinal Services, Inc.

Terry Bentley
Bell Sister Flats

Chelsea Buckbee
Rogue Credit Union

Melvin Burke
DC Farmers Co-op

Brant Guido
Umpqua Sand & Gravel

Guy Kennerley
Umpqua Insurance

John Robertson
Sherm's Thunderbird Market

Jami Seal
Lone Rock Resources

Roseburg Chamber

Vision *To advocate for and be the voice of the business community in the greater Roseburg area*

Mission *To strengthen, enhance and protect our members through political advocacy, economic development, community promotion and member programs and services*

THE ROSEBURG AREA CHAMBER OF COMMERCE is comprised of dedicated and highly trained professional staff. The chamber and its staff depend on the valuable contributions of member volunteers to meet goals and priorities to fulfill the chamber's mission. These volunteers serve on various committees and task forces established to achieve the chamber objectives and address matters of importance to the membership and local business community.

Membership Services

- Annual Membership Meeting Awards Dinner
- Business After Hours
- Business Perspectives E-Newsletter
- Candidate Identification and Endorsement
- Chamber Political Action Committee
- Directory Listings Online and Print
- Economic and Business Development
- Economic Forecast Program
- Government Affairs Team
- Greeters Committee
- Legislative Conference Calls
- Member Business Referrals
- Member to Member Discount Program
- Membership Meeting Luncheons
- Networking Activities
- Political / Legislative Advocacy
- Project Leadership Roseburg
- Grand Opening Ribbon Cuttings & Groundbreakings
- Sponsorship and Advertising Opportunities
- Website Exclusivity

PROFESSIONAL STAFF

Debbie Fromdahl
President & CEO
(541) 672-2648

Jolene Mantle
Executive Assistant
(541) 672-2648, ext. 17

Vacancy
Membership Growth/Relations
(541) 672-2648, ext. 23

2022 GOALS & PRIORITIES

Our Vision:

To advocate for and be the voice of the business community in the greater Roseburg area.

Our Mission:

To strengthen, enhance and protect our members through political advocacy, economic development, community promotion and member programs and services.

Roseburg Area Chamber of Commerce priorities are consistently reviewed to best serve local business, with with special focus in 2022 related to pandemic/post-pandemic emergence. Some key priorities for 2022:

- Advocate for business during Oregon's 2022 Legislative Session and advance RACC's 2021-2022 Public Affairs & Legislative Agenda, participate with local, regional and statewide coalitions to oppose anti-business and support pro-business initiatives, with specific focus on short and long-term assistance for business adversely impacted by pandemic shutdowns and for liability protections during and post-COVID.
- Where deemed appropriate and/or necessary, endorse candidates for local and state races based on the chamber's established criteria and candidate's pro-business voting/track record.
- Local business "go-to" for information and resources related to the pandemic and post-pandemic recovery. Timely distribution of information to business members via email blasts, social media and website updates. No-cost PPE distribution to area businesses through partnership with the city of Roseburg.
- Create business resource libraries for emergencies/catastrophes (i.e. Covid, wildfires) and for general best business practices. Future, add "member-only" access.
- Monitor issues and activities at the local, state and federal government levels. Actively support and oppose issues in order to advance the most pro-business environment possible. Hold regular meetings with elected officials.
- Keep membership informed of government affairs issues, particularly during Oregon's Legislative Session via newsletter articles, broadcast "Call to Action" emails, membership email blast updates, website "Current News," and programs/forums, as needed.
- Expanding member outreach and interaction including quarterly "9 at 9" with members. Increase business visitations and retention activities.
- Meet with local business to survey needs and barriers related to business retention and future potential expansion for our businesses, and to foster family-wage job creation and economic growth.
- Advocate for effective forest management on public lands to include increased harvest and reforestation, imperative to economic growth, long-term sustainability, and to curtail the significant increase in catastrophic wildfires seen in recent years; and advocate for proper management after a fire or other catastrophic event.
- Promote member businesses products and services through referrals, online member directory and printed directory, advertising opportunities, social media posts, "Shop local" promotion and member brochures on information floor.
- Launch new business councils this fall: Douglas County Lodging Industry, Douglas County Manufacturing Industry and Douglas County Retail Industry councils, others as needed.
- Programs/events priority one is getting back in person; consider new annual membership meeting/awards format, After Hours, complete Project Leadership 2021-22 and launch 2022-23, membership meeting programs with new component in February (2023) and back-to-back with Economic Forecast program in November.
- Promote our community as the best place to live, work and visit through onsite informational displays, online recreation, events and amenities information, statewide distribution of InUmpqua publication and Roseburg/Douglas County map; Land of Umpqua Facebook page and visitors/information center. Provide information to individuals and businesses looking to relocate through online, phone, email, mail and on-site inquiries and mailing of relocation information packets.

2021 ACTIVITIES & ACCOMPLISHMENTS

- Served as the “go to” business resource for COVID-19 pandemic information and resources through its online “Covid-19 Business Resource & Recovery Center Library,” expedient membership email blasts with essential information related to the pandemic and responding to phone and email inquiries from both member and non-member businesses
- Partnered with the city of Roseburg to provide needed PPE to Roseburg-area businesses
- While at time necessary/required to have the building closed to the public, chamber staff worked on-site on behalf of Douglas County businesses daily throughout the pandemic. The chamber did not close during 2020 or 2021
- Due to long-term, conscientious management of chamber funds, including ensuring adequate emergency operating reserves, the chamber remained operational and worked to protect the interests of business and fulfill its obligations to its members, despite the inability—due to the pandemic—to generate non-dues revenue
- The Roseburg Area Chamber of Commerce remains financially stable and secure
- Continued progressing the 2019-20 Public Affairs & Legislative Agenda, specifically during the 2020 Oregon Legislative Session; developed and implemented the 2021-22 Legislative Agenda for the 2021 session, to oppose anti-business legislation and support pro-business legislation
- Hosted State of the County, Legislative Preview, State of the Timber/Wood Products Industry and other programs in-person and virtually in 2020, a virtual State of the County in early 2021, with in-person membership meeting programs returning in November 2021
- Represented the interests of business with government monitoring federal, state and local political activity, taking positions when appropriate, with an emphasis on lessening and eliminating mandates to get our businesses fully open and advocating for short-term and long-term financial support and restoration
- Provided membership political awareness, especially during both the 2020 and 2021 Oregon legislative sessions, via newsletter articles, “Call to Action” emails, and in-person and virtual membership meetings
- Increased social media posts, member email blasts and website updates
- Continued to upgrade and expand chamber communications, specifically its electronic newsletter, “Chamber News” emails and “Calls to Action”; produced six editions of Business Perspectives in addition to expanding current news on website
- Hosted the 66th meeting of the membership and awards dinner in January 2020, presenting RACC’s awards for business recognition program at the event, planning two years of recognition in 2022
- Publish updated, online editions of the InUmpqua (business directory, community profile & visitor magazine); continued to provide printed edition to chambers and visitor centers around the state
- Countywide “shop local” messaging; advocated “shop local” for Black Friday and “shop small” on Small Business Saturday and throughout the holiday season
- Completed 31st year of Project Leadership Roseburg, with “The Exploration Garden” class project for the Family Development Center in late Spring 2020 and brought the 2021-22 leadership program back in September 2021
- Hosted virtual Economic Forecast 2021 program in 2020 and Economic Forecast 2020 was back in person in the Fall of 2021
- Provided visitor information on-site at the Roseburg Area Chamber of Commerce & Visitor Center during “high” season in 2020 and from June 2021 to present day

Land of Umpqua Adventures



When it comes to the long list of reasons people are wild about Roseburg and Douglas County, at the top of that list is a combination of the natural, unsurpassed beauty and the unlimited outdoor experiences existing in our little corner of the world.

The Land of Umpqua is truly the land of authentic adventure! From an exciting whitewater river ride to a fabulous salmon fishing expedition on the Pacific Ocean, almost anything you can dream to do outdoors is accessible in the Roseburg area. This region, the Land of Umpqua, is best known for the bounty and power of its rivers, where steelhead, other wildlife and waterfalls abound.

Pristine rivers run from the high Cascade Mountains through fertile valleys and from the Coast Range to the Pacific Ocean. These rivers, the legendary North Umpqua Trail System and lush park systems have so much to offer. The North Umpqua Trail along Highway 138 is also an ideal, scenic route to must-see Crater Lake National Park where waterfalls are abundant. Hikers, bikers, cyclists, bird watchers, fishing enthusiasts—novice or expert, rafters, golfers, skiers, skaters, boaters, ball players, campers and anyone else hungry for outdoor fun find their paradise here in the Land of Umpqua. Whether you're a visitor or a resident, Roseburg is the perfect base camp for year-round recreation and adventure.



WHITewater RAFTING, KAYAKING & BOATING

The Umpqua Rivers provide numerous additional recreational opportunities. Two of the most popular are rafting and kayaking. Local rafting guides can provide exciting river adventures, offering half and full-day outings over Class I, II, III and IV rapids. Experience the thrill of whitewater rafting on the North Umpqua River, a steep and rugged canyon with towering Douglas Fir forests. A number of guide services hold permits for the wild and scenic portion of the river.

Other activities and experiences include boating, water skiing, swimming, brilliant waterfalls and natural hot springs.

Reservoirs, lakes and rivers throughout the Land of Umpqua offer a variety of boating opportunities. The Roseburg Area Chamber of Commerce & Visitor Center has a guide which includes information on boat access points along the North, South and main Umpqua Rivers.

THE NORTH UMPQUA TRAIL OFFERS A VARIETY OF OUTDOOR RECREATION

MOUNTAIN BIKING

The North Umpqua Trail offers year-round hiking with breathtaking views, countless waterfalls and endless outdoor activities from mountain biking, horseback riding, bird watching, botanical sightseeing and photography to horseback riding.

The North Umpqua Trail is referred to as “The NUT” by local mountain biking enthusiasts. In part because this 66-mile trail system is like a bag of mixed nuts. It offers something to fulfill every kind of mountain biker’s experience. The NUT to locals is referred by visitors as “best must-ride trail in North America” and “epic.” Bicycling Magazine labels the North Umpqua Trail, number 29 on its “50 Rides of a Lifetime;” a worldwide compilation.

The NUT offers 12 primary trailheads which provide parking and access points. Sections with “captivating” names like Deer Leap, Dread & Terror and Panther, vary from 3.5 to 15.6 miles in length and provide all levels of riding difficulty from smooth, high-buff speed areas to more challenging rocky, super technical areas.

HIKING

To get the full experience of the NUT, we suggest you spread it over two or three days. Don’t forget to take in the memorable sights and features along the trail which includes two dozen waterfalls, lakes, natural hot springs, spectacular views and stunning scenery.

Hundreds of hiking trails for the “backpacking enthusiast” are offered along the NUT, in addition to hundreds of beautiful trails throughout other parts of the Land of Umpqua. Campgrounds are located along the trail. Primitive camping along the trail is allowed, but it is recommended in locations out of view from other trail users.

**SEE THE NORTH UMPQUA TRAIL MAP
ON PAGES 42-43. DETAILED HIKING
MAPS AND BROCHURES ARE AVAILABLE
AT THE ROSEBURG AREA CHAMBER OF
COMMERCE.**

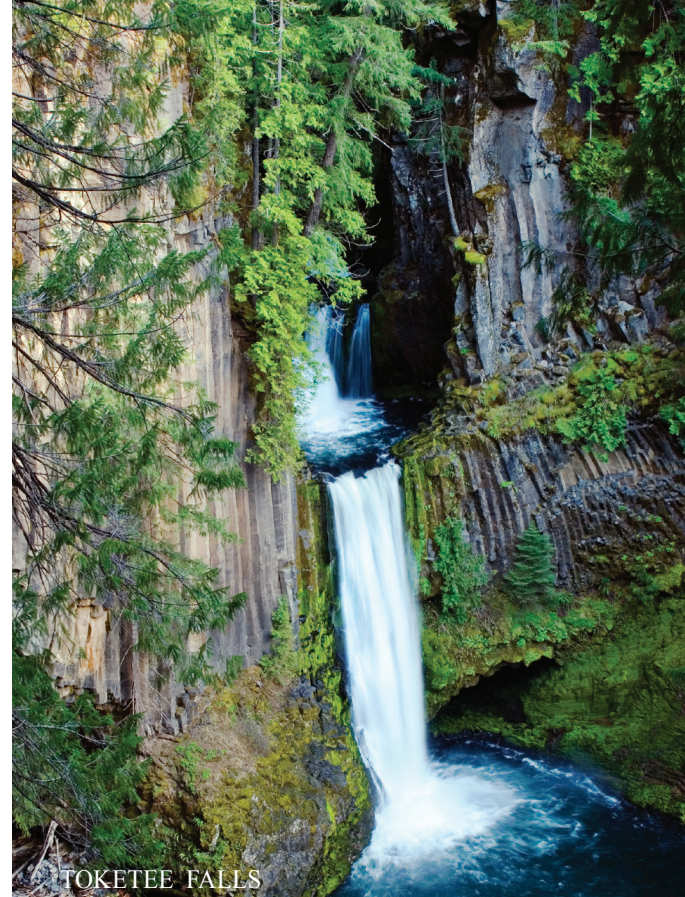


WATERFALLS

The Land of Umpqua is home to numerous spectacular waterfalls. The North Umpqua and High Cascades segments of the Rogue-Umpqua National Scenic Byway are discovered by traveling east from Roseburg on Highway 138. The road meanders alongside the legendary waters of the North Umpqua River, deep into forests of old growth Douglas Fir. Along the way are the sights and sounds of thundering waterfalls—24 in all including Clearwater, Deadline, Fall Creek, Susan Creek, Toketee and Watson Falls—many just a short walk from your car. They are well worth the visit.

Watson Falls is the highest waterfall in southwest Oregon, plunging 272 feet over the edge of a basalt lava flow. A 0.4-mile trail rated “moderate” leads up to the base of the falls, with an excellent close-up view offered from a wooden bridge that crosses the creek 0.3 miles from the trailhead.

Toketee Falls (right) is a two-tiered falls. The upper falls drops 40 feet and the lower falls plunges 80 feet over a sheer wall of basalt. A 0.4-mile trail rated “moderate” winds through an old-growth forest and ends at a sturdy platform overlooking the falls. In the Chinook language, “Toketee” means “pretty” or “graceful,” and Toketee Falls definitely lives up to its name.



Umpqua National Forest (541) 957-3200



FISHING

The Land of Umpqua offers the finest bait and fly fishing in Oregon, from ocean fishing at Winchester Bay to lake and river angling.

The majestic North Umpqua River “lures” locals and visitors to it year after year. No matter the season or the water sport, the offering of the North Umpqua River is incomparable.

Long recognized as a premier destination for fly fishing for wild steelhead, the North Umpqua River is also known for its 33-mile section of “fly angling only water.” There has long been the misconception these regulations were set in place for fly fisherman to pursue their sport; when, in fact, the regulations were originally established to protect the runs of salmon which spawn in the river.

As a fly fishing stream the North Umpqua is known as the “graduate school of fly fishing”—a testament to the difficulty of fishing and wading this storied river.

SCENIC BYWAY & COLLIDING RIVERS

For those who prefer not to get wet, a scenic drive is a great way to take in the beauty of the North Umpqua. A drive along Highway 138, a National Scenic Byway, will take you on a 60-mile tour of some of the state's most remarkable scenery. From wildlife watching areas and hiking trails amidst towering forests, to picnic spots and thundering waterfalls, you'll be truly impressed with what you'll discover.

Be sure to stop at the Colliding Rivers viewpoint where the Little River and the North Umpqua converge. Here you will witness the unique maelstrom of water where the rivers meet head to head—the only place in the world where this phenomenon occurs.



CYCLING

Scenic bike and walking paths are located throughout the city of Roseburg. Douglas County has numerous marked bike routes. In recent years, the Land of Umpqua has hosted several CycleOregon events and has seen growth in wine/cycling tourism. Not only does the area offer scenic bike paths located along the South Umpqua River and throughout the city of Roseburg, but also through the rolling valleys of rural Douglas County. See the walking and bike pathway map on page 46.



ROCK CLIMBING

The Land of Umpqua is home to over 200 climbing routes, including over 100 routes in the ever popular Callahan Mountains. Located 25 minutes west of Roseburg, with an elevation of 2,200-2,500 feet, the Callahans offer a good climbing experience year round. For occasional seasonal closures in the North Umpqua area, call the North Umpqua Ranger District. The Youtlkut Pillars, east of Roseburg, sit at elevation of 4,000 feet and offers climbers a volcanic multi-columnar crag with documented and undocumented routes. Recorded routes have fixed anchors at the top with climbs ranging from 5.6 to 5.9.



DISC GOLF

Roseburg boasts three disc golf courses, each with unique challenges for both novice or expert. Whistler's Bend disc golf course is considered by many enthusiasts to be one of the best courses in the Northwest. Located within 175 acre Whistler's Bend county park, this 18-hole gem is bordered on three sides by the North Umpqua River. Riverfront Disc Golf Course is centrally located in Roseburg and shares boundaries with Stewart Park and the VA grounds. It is nestled alongside the South Umpqua River, the bike path and features 14 Mach 2 baskets and 4 tone poles. Green Oaks Park located in Green District along Roberts Creek, the disc course has six Mach 2 baskets with three tee pads each.



GOLF

The Land of Umpqua offers exceptional experiences for golfers of all kinds and skill levels. In addition to 18-hole public courses in Myrtle Creek and Sutherlin, Roseburg has its 9-hole public Stewart Park Municipal Golf Course located in the heart of the city and the Roseburg Country Club, a private club. The Roseburg Country Club offers an 18-hole championship golf course. This club is reciprocal with other private member clubs. Contact the Roseburg Area Chamber of Commerce & Visitor Center for more information about all Land of Umpqua golfing venues.



WILDLIFE SAFARI

A WILD EXPERIENCE

Each day as the sun rises over the Land of Umpqua, roaring lions, bellowing rhinos and the social “chattering” of primates are just some of the sights and sounds waiting for those willing to take a walk on the wild side. Wildlife Safari is the Pacific Northwest’s premier animal park filled with animals from Africa, Asia, North and South Americas. For nearly forty-five years residents and visitors alike have had the privilege of experiencing the world’s wildlife in a natural habitat environment.

Wildlife Safari is a 600-acre drive-through park just eight miles south of Roseburg in Winston, Oregon that attracts people from around the globe. Approximately 200,000 people visit the park each year to experience the nearly 600 animals from over 75 different species. Visitors to Wildlife Safari can view these animals from their vehicle as they freely roam the park’s wide open spaces including a “splash pond” for resident elephants Tava, Moja, and Valerie. The 14,000-gallon watering hole is about 50’ x 55’ and plunges to 6½ feet at its deep end. A waterfall in the middle of the pool drops a wide tide of water into the pool as a fountain, carved like an elephant’s trunk spouts

water into the air. Visitors to the park can get up close and personal at the Safari Village’s petting zoo or by taking advantage of one of Wildlife Safari’s special experiences including lion or giraffe feedings, cheetah walk and elephant rides or encounters. The Safari Village also offers train rides through the park, education programs, special year-round events and exhibits and the White Rhino Restaurant.

Known around the world for its cheetah breeding program, Wildlife Safari continues to grow its Wildlife Encounters program. With an encounter, you can choose to feed a giraffe, help bathe an elephant, be a companion ranger and be just feet away from lions, bears, or cheetahs at feeding time! Be sure and call the safari in advance of your visit to learn more about and schedule a special wildlife encounter for an experience of a lifetime.

Wildlife Safari is AZA (Association of Zoos and Aquariums) accredited for meeting the highest zoological professional management standards. The mission and purpose of the organization exemplifies its ongoing dedication to education, conservation and research.



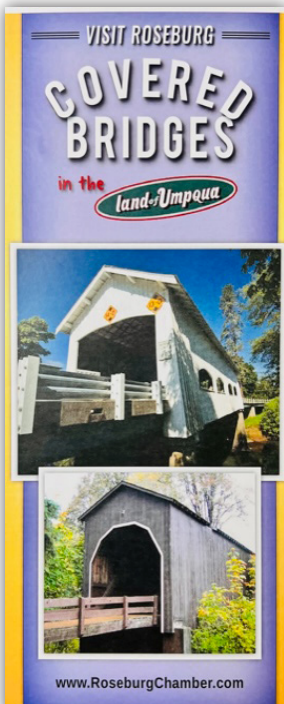
MILO ACADEMY BRIDGE

COVERED BRIDGES HAVE BEEN A PART OF OREGON'S HISTORY FOR OVER 150 YEARS

Simple and practical, the bridges were often frequently made from locally-grown wood. Strong and straight Douglas Fir beams were hewn for the trusses and hardwoods utilized for the fastenings. House-type structures were constructed over the top of the of the timber trusses to protect them from the damp Oregon climate and to increase their longevity.

In the 1930s, Oregon was home to over 300 covered bridges. Today, 53 still stand, the largest concentration in the western US. The Land of Umpqua is home to several of these surviving historic bridges including Cavitt Creek, Horse Creek, Milo Academy (pictured), Mott bridges and more. Touring these remaining covered bridges will give visitors a glimpse into Oregon's history.

For a separate covered bridge tour map and brochure, stop by the Roseburg Area Chamber of Commerce & Visitor Center.



1 CAVITT CREEK BRIDGE

Was built in 1942 and spans 70 feet, crossing Little River at its junction with Cavitt Creek. Raw logs make up the upper supports. The bridge's odd portal shape was designed to accommodate log trucks.

2 HORSE CREEK BRIDGE

Built in 1930 in Lane County, it spanned the McKenzie River. This 110-foot bridge was closed in 1968 but found new life in 1990 when it was disassembled and moved to its current site in Myrtle Creek's Millsite Park, where it is used as a footbridge.

3 MILO ACADEMY BRIDGE

Built in 1962 and spans 100 feet to cross the South Umpqua River. The bridge is actually made of steel with a housing of wood. The structure was constructed to replace an original covered wooden bridge from 1920. The bridge provides access to the Milo Academy boarding school.

4 NEAL LANE BRIDGE

This is one of the shortest covered bridges in Oregon at 42 feet. Built in 1939 for \$1000, the bridge is the only one in the state that uses a kingpost truss design. Arched portals, narrow windows and plank flooring add to its rustic charm.

6 ROCHESTER BRIDGE

Built in 1933 to replace a span built in the 1860s. This elegant 80-foot long bridge has unique side windows with gently-curved tops. Just west of Sutherlin, this bridge spans the Calapooia River.

5 PASS CREEK BRIDGE

Built in 1925, Pass Creek Bridge replaced a previous covered bridge built in 1906 and was in service until 1981. In 1989, the 61-foot bridge was moved a short distance downstream and rebuilt as a footbridge.

7 MOTT BRIDGE

While it's not a covered bridge, it has historical significance. Built in 1935-36 by the Civilian Conservation Corps (CCC), the 237-foot three spandrel arch bridge is the sole survivor of three bridges built with this design in the Pacific Northwest, and is an Oregon Engineering Historic Landmark.



Discover ocean beaches when you include a visit to the Oregon Coast during your time in the Land of Umpqua. Just a little over an hour's drive from Roseburg is where the Umpqua River meets the Pacific Ocean. It is a magical place with stars on the beach, plumes from migrating whales and vast sand dunes stretching for miles. Coastal activities include horseback riding to off-road vehicle sand dune riding at the Oregon Dunes National Recreation Area. Also experience the usual expected activities of fishing, clamming and crabbing to the not-so-expected elk and whale watching. Adventure awaits you on the Oregon Coast.



UMPQUA RIVER LIGHTHOUSE & MUSEUM

Winchester bay is home of the 65-foot lighthouse that emits a distinctive red and white flash. The museum tells of the unique origins of the rare red lens, among other local historical facts. Lighthouse Tours: 10 am to 4 pm daily (May-October) and 10 am to 3pm Fri-Sun (Mar-Apr, Nov-Dec). Museum hours of operation change seasonally.

UMPQUA DISCOVERY CENTER

Located along the banks of the Umpqua River in Reedsport near the Oregon Coast, the Umpqua Discovery Center features cultural exhibits on the history of the Coos, Lower Umpqua and Siuslaw Indians, along with early explorers and settlers. A logger's camp, cannery, schoolhouse and working weather station invite you to interact with the exhibits. Open 10 am to 5 pm Mon-Sat (June-Sept) and 10 am to 4 pm Mon-Sat (Oct-May) and noon to 4 Sun (year round).





During winter and spring months, the Land of Umpqua offers every level of winter activity from extreme snowboarding to tranquil fireside moments in a snow covered lodge. Beautifully groomed cross-country ski trails, Mount Bailey snowcat skiing and 200 miles of groomed USFS trails for snowmobiles and all-terrain vehicles await in the Diamond Lake area.

One of the most enchanting winter wonderland of all, Crater Lake National Park, where an average of 44 feet of snow falls each year. The park offers cross-country skiing and ranger-guided snowshoe walks; snowshoes are provided and the tours are free. Other winter activities in the Land of Umpqua include snowboarding, tubing, ice skating and ice fishing.



CAT SKI MT. BAILEY

If you are looking for an adventurous snow experience, cat skiing or snowboarding Mt. Bailey might just be what you've been looking for. The ride is awesome, the view is epic, and the snow is untouched—for real, exclusive access to the mountains pristine powder is given to only twelve skiers or snowboarders a day.

Mt. Bailey is home to the country's longest running backcountry cat skiing operation. With an average of 15,000 to 18,000 feet vertical spread across more than 6,000 acres, Mt. Bailey offers a buffet of terrain from cliffs, chutes, glades, bowls and mountain faces. Reservations are required, call Diamond Lake Resort at (541) 793-3333 ext. 7 or go online to www.catskimtbailey.com.

TUBING AT DIAMOND LAKE

Go tubing like a kid again at Diamond Lake Resort! Grab a tube and ride the 470-foot conveyor to the top for as many rides as you want. The conveyor is the second longest in the northwest and can carry 1,000 people in just one hour so you'll never have to wait in line.

OUTDOOR RECREATION REFERENCES

BLM Roseburg District	(541) 440-4930
Crater Lake National Park	(541) 594-3000
Diamond Lake Resort	(541) 793-3333
Umpqua National Forest	(541) 957-3200



CRATER LAKE NATIONAL PARK

The Land of Umpqua doesn't just span the length of the county's I-5 corridor. It also stretches from the high Cascade Mountain Range to the shores of the Pacific Ocean. Roseburg has the distinction of being in between these beautiful and unique locals.

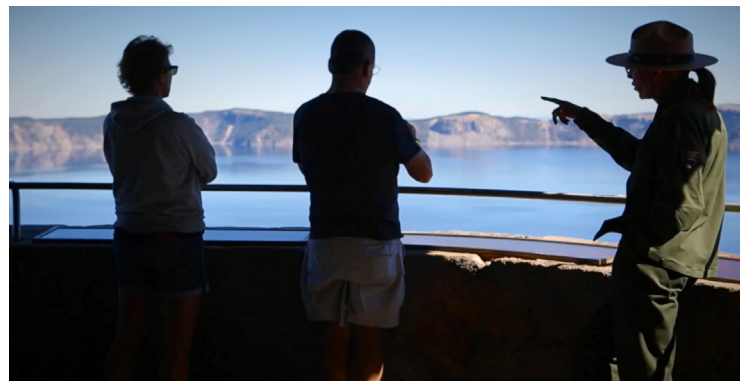
Roseburg is the northernmost I-5 portal to majestic Crater Lake National Park and the most scenic way to get there when you visit Roseburg. The seemingly short journey of little more than 100 miles from Roseburg via the breathtaking North Umpqua segment of the Rogue-Umpqua Scenic Byway offers an unforgettable route to Crater Lake. Stop and see cascading waterfalls of the North Umpqua Trail along the scenic byway, aptly nicknamed "The Highway of Waterfalls." The road follows 40 miles of the wild and scenic North Umpqua River, world-renowned for its distinctive blue color and its steelhead fishing. At the end of your journey you'll find yourself at the northern rim of one of the world's wonders. Oregon's only National Park.

Nowhere else on earth can you witness a lake so deep and pure, creating an intense blue color that never ceases to amaze. Every year, Crater Lake National Park melts away months of winter snow revealing its summertime glory. For visitors during the summer months the bright sunny days at the crater rim make for the best pictures of the lake capturing an array of brilliant blue and turquoise water. Summertime activities include hiking, boat tours, trolley tours, ranger-guided programs and a number of other activities available at Crater Lake National Park.

The park is open year-round and activities aren't limited to just the summer months. Visitors during the winter

months will find a winter wonderland setting for snowy adventures (see page 13 for winter activities).

The Steel Visitor Center is open every day except December 25. Open 9:00 am to 5:00 pm from mid-April to early November and 10:00 am to 4:00 pm the rest of the year. The Rim Visitor Center at Rim Village is open daily 9:30 am to 5:00 pm from late May to late September. Call (541) 594-3000 for more information.



DID YOU KNOW?

CRATER LAKE WAS FORMED WHEN MT. MAZAMA ERUPTED OVER 7,700 YEARS AGO AND IS THE DEEPEST LAKE IN THE UNITED STATES. IT IS SURROUNDED BY SHEER CLIFFS ALMOST 2,000 FEET HIGH AND HAS TWO ISLANDS. THE 33 MILES AROUND THE CALDERA PROVIDES 20 SCENIC OVERLOOKS.



LOON LAKE LODGE

Between Roseburg and the coast you'll find tranquil Loon Lake, a favorite family getaway with plenty of activities. Guarded from the coastal winds and fog by the scenic mountains of the Coastal Range, Loon Lake offers a more temperate climate than the coast and inland valleys. The calm surface of the lake from the mountain barriers makes for some of the smoothest water skiing in southern Oregon.

In addition to water skiing, activities include swimming, fishing, kayaking, canoeing, and paddle boarding, just to name a few. Visitors will find a selection of equipment rentals are available, from pontoon boats and ski boats to paddle boards and canoes, to enhance their lake experience.

The lodge area of the lake offers a full-service deli with deck overlooking the lake, an ice cream stand, gas station, general store and a gift shop. Sandy swimming beach, snack shack, and boat docks can be found in the marina area. Loon Lake also has a sandy beach, volleyball court and summer activities planned by resort staff.

A variety of lodging options are available at Loon Lake including vacation rentals, cabins, cottages, and even yurts. For those looking for a more outdoorsy overnight option, the lake also offers RV sites and tent camping. For reservations call (541) 599-2244.



DIAMOND LAKE RESORT

Nestled in the southern Cascade Mountains with an incredible view of Mt. Thielsen as its backdrop, Diamond Lake is an outdoor enthusiast's paradise. Located just five miles north of the Crater Lake National Park access from Roseburg by the picturesque North Umpqua segment of the Rogue-Umpqua National Scenic Byway. While it certainly offers everything one would expect from a lake with a surface covering more than 3,000 acres, the area offers so much more than water-related activities.

Summer recreational activities including Rainbow Trout fishing, boating (charters for fishing, patio boats, paddle boats, bumper boats, kayaks and canoes are all available to rent) and water sports. Non-water activities include cycling on paved trails, mountain biking on single track dirt trails, horseback riding, hiking, camping with volleyball, horseshoeing and more.

Diamond Lake Resort, Oregon's Gem of the Cascades, offers a motel, cabins, and an RV park that offers full hook up spaces from May to October (snow permitting). The resort also boasts a café, South Shore Pizza (seasonal—summer), and the Mount Bailey Grill & Sports Lounge. Call (800) 733-7593 for more information.

The US Forest Service manages three campgrounds with over 450 camping sites in the Diamond Lake area, with both reserved and first-come, first-served camp sites, including restrooms, showers, drinking water and RV dump site.



DAY 1

SOUTH & CENTRAL VALLEY WINERY TOUR, WILDLIFE SAFARI AND MUSEUM

Spend your morning at the Wildlife Safari in Winston, a 600-acre drive-through park where you will have close encounters with hundreds of animals from all over the world. Be sure and spend some time in the Safari Village for special exhibits and shows and have lunch at the White Rhino.

To begin your experience with the wonderful wines from the Land of Umpqua, visit the nearby Girardet winery. On your way back to Roseburg, visit the award-winning Douglas County Museum. Spend your late afternoon visiting a few more wineries including Reustle Prayer Rock Vineyards.

While in the central valley area, you may want to drive to the Rochester Covered Bridge off Highway 138.



Douglas County Museum



DAY 2

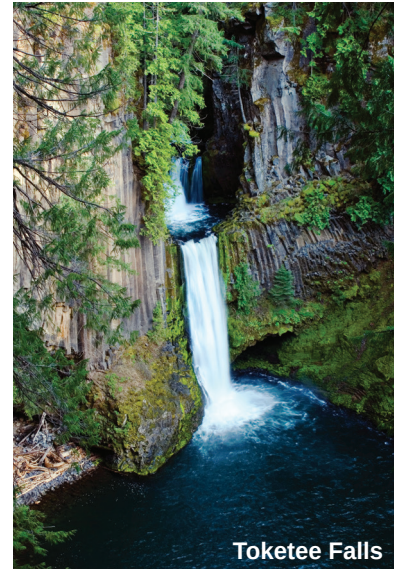
WILD AND SCENIC NORTH UMPQUA

Begin your day early and travel the North Umpqua segment of the Rogue-Umpqua Scenic Byway, Highway 138, towards Glide. This route is considered one of the best roads in the nation for scenic beauty, recreational opportunities, and is a destination unto itself.

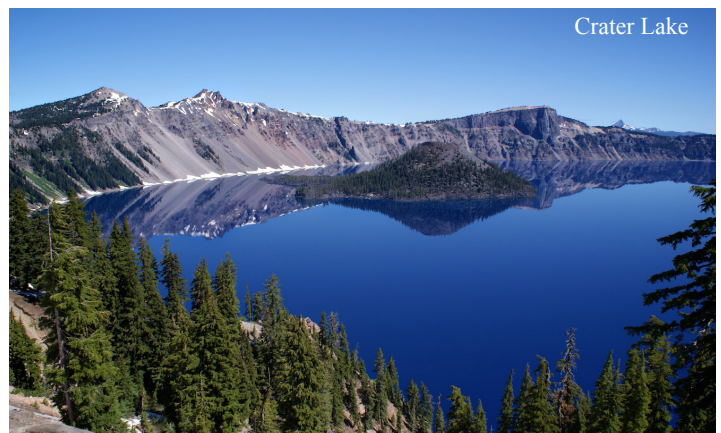
Your first stop should be the Colliding Rivers viewpoint where the swift deep waters of the North Umpqua River meet the rapids of sparkling Little River head-on. Continue east on Highway 138 taking the opportunity to stop at a few of the parks and pull-offs to view the magnificent North Umpqua River. You should also stop along the way and hike into several of the Land of Umpqua's waterfalls.

Fall Creek, Clearwater, and Watson Falls are short hikes.

For a longer adventure hike to the two-tiered Toketee Falls. The perfect place to stop for lunch is the historic Steamboat Inn. After lunch it's on to Diamond Lake with Mt. Thielsen—the lightning rod of the Cascades—as its backdrop. And, of course, your final destination before heading back to Roseburg is to take in the beauty of world-famous Crater Lake, the deepest lake in North America.



Toketee Falls



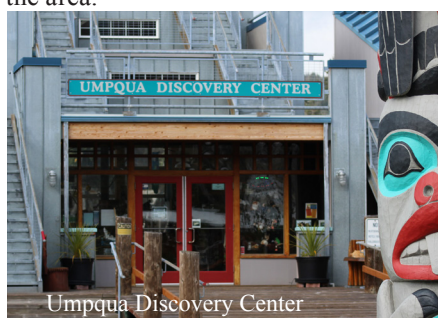
Crater Lake

FOR RECREATION INFORMATION, RESERVATIONS AND PARK HOURS CALL THE CRATER LAKE NATIONAL PARK SERVICE AT (541) 594-3000

DAY 4

SCENIC DRIVE AND THE OREGON COAST

Travel west from Sutherlin on Highway 138, a designated state scenic byway. Take a break in the town of Elkton for a bite to eat and visit wineries. Before getting back on the road again, you'll want to take in the Butterfly Pavilion, where you'll walk through butterfly and hummingbird gardens in this 4½-acre botanical garden featuring native trees and shrubs. Your next stop before heading for the Oregon Coast should be Fort Umpqua. Continue west on Highway 138, following the Umpqua River to the Pacific Ocean. Just before Reedsport, stop at the Dean Creek Elk viewing area. Upon entering Reedsport, be sure and stop at the Discovery Center to learn more about the local and natural history of the area.



Next up, are visits to one of the many public beach areas where the Pacific Ocean rushes to meet the Oregon shore, the Oregon Dunes National Recreation Area and the Umpqua River Lighthouse and Museum in Winchester Bay. No visit to the Oregon Coast is complete without enjoying a meal of fresh seafood at one of the area's local restaurants.

Depending on your time, you can return to Roseburg the way you came or for more scenic beauty, take the longer "loop" and head south on Highway 101 and return to Roseburg by way of highway

42. If you choose this route, you can make a short side trip and check out the rocky headlands of Cape Arago and the beautiful formal gardens at Shore Acres near Coos Bay.

DAY 5

EVERYTHING ELSE AND EVERYTHING YOU MISSED

The ambitious itineraries of your first four days in the Land of Umpqua have, no doubt, left you with sights and experiences you either missed or would have liked to have spent more time. And so, day 5 will give you the opportunity to spend more time at a museum, gaming, or visiting more of our waterfalls and covered bridges. You can visit that winery you missed on a previous day or revisit one you wanted more time to explore. Maybe it's the day you pamper yourself at the River Rock Spa in Canyonville or one of our full-amenities spas in Roseburg.

Maybe it's the day you tackle one of our many authentic outdoor experiences—fishing, hiking, rafting, biking, cycling, golfing . . . you name it. Or, maybe, with all there is to do in the Land of Umpqua, you'll have to save some of these activities for your next visit. You'll always be welcome in the Land of Umpqua.



DAY 3

HISTORIC CITIES, ARTS, AND ENTERTAINMENT TOUR

Start your day at the Roseburg Area Chamber of Commerce & Visitor Center with information on all things there are to see and do in Roseburg and the Land of Umpqua, including "The Blast" tour. The digital tour begins at the chamber and is the perfect way to get your visit of historic downtown Roseburg started. After completing the tour, be sure to check out the assortment of shops, art galleries, antique stores and restaurants. Take time to view statues, murals, and historic monuments in historic Roseburg.

You'll want to visit the galleries and gift shop at the Umpqua Valley Arts Center, located in the original 1917 Veterans Administration building on Harvard Avenue. Next, step back in time with a visit to historic Oakland, just 12 miles north of Roseburg on I-5.

Historic Oakland was established in 1881. Explore turn of the century brick buildings, a museum, restaurants, antique stores and more before heading back to Roseburg for dinner. If your evening is free, it's the perfect time to head south to Seven Feathers Casino for some fun Nevada-style gaming.





Douglas County Fairgrounds
I-5 Exit 123 2110 • SW Frear St • Roseburg, OR 97471
(541) 957-7010 • www.douglasfairgrounds.com

DOUGLAS COUNTY FAIRGROUNDS & SPEEDWAY

Looking for a good time? Check out the Douglas County Fairgrounds! From NASCAR to Pro Rodeo, and of course, the Douglas County Fair, there's always something fun and exciting on the horizon at the Douglas County Fairgrounds and Speedway.

Keep an eye on the events calendar as there are plenty of things to do that you don't want to miss. The fairgrounds hosts one of the "Best County Fairs in the Country," the Douglas County Fair. From chart-topping musical artists to midway rides and blue ribbon livestock, fair time is fun time.

The Brew Ha Ha features craft beers from local Roseburg breweries as well as other special producers from around Oregon. If you are feeling lucky, try your hand at the annual Poker Craze, a Texas Hold'em poker tournament.

See racing action from NASCAR, NSRA Sprints, and Trailer Races at the speedway. The thrill of fast paced races and the fun of the track is waiting. There are a multitude of races featuring different vehicles, you're sure to see something new each time.

Get in gear, outdoor gear that is, at the Sportsmen's & Outdoor Recreation Show. This is the perfect event to not only get ideas, but find that one piece of equipment that is quite literally, a "game" changer! Get up to speed on the latest gear, find your next passion in hunting or fishing or just gain a better appreciation for all the outdoors has to offer.

The fairgrounds is also a great place to hold your next event. They offer banquet facilities and on-site catering for private and public events. With multiple buildings and more than 80,000 sq. ft., the fairgrounds can host just about any event imaginable.

No matter what brings you to Roseburg, be sure to check out what's happening at the fairgrounds, you won't want to miss it! Annual events hosted by the fairgrounds include:

Sportsmen's Show (February)
Brew Ha Ha (May)
FFA & 4-H Livestock Auction (June)
Douglas County Fair (August)
Christmas Craft Fair (December)

MUSEUMS

Douglas County Museum

Engaging exhibits depict 8,000 years of Native American culture, pioneer history and natural history unique to the Land of Umpqua. Experience railroading history by touring through a restored 1882 Oregon and California Railroad Depot. The museum is home to one of the largest historical photographic collections in the state. A children's discovery room and outdoor archeological "Dig Into History" site gives youth the opportunity for hands-on learning.

Historical Tour of Roseburg Homes & Buildings

Flood-Lane House

Mill-Pine National Historic District

Laurelwood National Historic Register District

Brochures on these tours are available at Roseburg Area Chamber of Commerce & Visitor Center



Oakland Museum

Just 13 miles north of Roseburg and two miles east of I-5, the town of Oakland is a walk back in time. The first Oregon Historic District recognized by the National Register of Historic Places, Oakland includes over 130 historic properties. The Oakland Museum displays artifacts from the area's past, along with a replica of an early post office and general store. Open 1:00 to 4:00 pm daily; closed holidays.

Pioneer-Indian Museum

Located in Canyonville, south of Roseburg, the Pioneer-Indian Museum displays trace the history of the South Umpqua Valley from the days of Indians through the arrival of the pioneers. A large mural depicts Indian pictographs drawn several hundred years ago by the Umpqua Tribe. Open 1:00 to 5:00 pm Wednesday – Sunday (or by appointment).

FROM EVERYDAY ENTHUSIASTS TO CONNOISSEURS—WINE LOVERS KNOW LAND OF UMPQUA WINES DELIVER VARIETY AND EXCELLENCE

Once considered to be the wine industry's best kept secret, wines from the Umpqua Valley region have not just grown in popularity and exposure, but in international acclaim for diversity and excellence. Unlike most of Oregon's wine regions known solely for their Pinot Noir, the Land of Umpqua's range of growing conditions, soil types and micro-climates has expanded the list of varietals grown by Umpqua Valley wineries beyond most every region in the United states. While producing exceptional Pinot Noir, the region's growing list of vintners produce an array of award-winning wines, including: Baco Noir, Cabernet Sauvignon, Chardonnay, Marechal Foch, Tempranillo, Sauvignon Blanc, Grüner Veltliner, Merlot, Malbec, Syrah and Riesling, and so much more.

With the Umpqua River and its tributaries coursing through our beautiful valleys, the region's unrivaled natural beauty and warm hospitality of local winemakers provides an idyllic destination for visitors. We hope you'll take time to visit one—or better yet, all—of these great local wineries. Not only do they offer the very best wine the Land of Umpqua has to offer, but are invaluable partners with the chamber in promoting the Roseburg area as a destination for wine enthusiasts.

Whether you're in the mood to visit a historic winery or a chic, urban winery, there is a style and flavor for every palate.



The Umpqua Valley wine industry has grown to more than 30 wineries—all within 30 miles of Interstate 5. Using Roseburg as your home base, visiting all of our area wineries is quite doable utilizing our two winery tour routes—the central and south (see “Itineraries” on pages 16-17). Here are a few of our chamber member wineries to get your wine tasting journey started.

PREFERRED CHAMBER-MEMBER WINERIES

GIRARDET

895 Reston Road
Roseburg, OR 97471
(541) 679-7252
www.girardetwine.com

REUSTLE-PRAYER ROCK VINEYARDS

960 Cal Henry Road
Roseburg, OR 97471
(541) 459-6060
www.reustlevineyards.com



CHECK IN WITH OUR
LOCAL WINERIES
FOR SPECIAL EVENT
INFORMATION AND
TASTING ROOM
DAYS/HOURS.

ANNUAL EVENTS

2022

NOVEMBER

- 11 Douglas County Veterans Day Parade
- 20-30 Festival of Lights
- 25-26 Thanksgiving Holiday Winery Open Houses

DECEMBER

- 1-31 Festival of Lights
- 2-4 Christmas Craft Fair
- 10 Timber Truckers Light Parade
- 16-18 Wildlife Safari Wild Lights
- 17 Sutherlin Timber Town Toyland Light Parade

2023

JANUARY

- 1 Festival of Lights--Last Night
- 9 Roseburg Chamber Membership Membership 2023 Luncheons Begin

FEBRUARY

- 1-3 Umpqua Fishery Enhancement Derby
- 10-12 Sportsmen's & Outdoor Recreation Show
- 25 Poker Craze - Texas Hold'em Tournament

MARCH

- 23 RACC Annual Awards Event

APRIL

- 28-29 Umpqua Valley Quilt Show
- 29-30 Glide Wildflower Show

MAY

- 13 Brew HaHa Craft Beer Fest

JUNE

- 3 Lamb Show, BBQ, & Auction
- TBD Movies in the Park
- TBD Music on the Half Shell Concert Series
- 23-25 Summer Arts Festival

JULY

- TBD Music on the Half Shell Concert Series
- TBD Music Off Central Concert Series
- TBD Riverbend Live Concert Series
- 5-9 Graffiti Week Events

AUGUST

- TBD Music on the Half Shell
- 9-12 Douglas County Fair
- 18-20 Sutherlin Blackberry Festival
- 26-27 Celtic Highland Games



Roseburg offers plenty of lodging options from national hotel chains to historic bed and breakfast accommodations. RV parks and campgrounds as well as resorts, large and small, dot the landscape throughout Douglas County. Whether your plans are an overnight visit or, better yet, a week-long stay in the scenic Land of Umpqua, we have the lodging to meet your needs and vacation style. Here are just a few options.

B&B'S/AIRBNBS

BELL SISTER FLATS

620 SE Main Street
Roseburg, 97470
(541) 580-6302
www.bellsisterflats.com

THE CHALET (GIRARDET)

895 Reston Rd.
Roseburg, OR 97471
(541) 679-7252
www.girardetwine.com/visit-girardet/

RIVER HOUSE

5579 SW Grange Rd.
Roseburg, OR 97471
(541) 679-7256
www.risingriverrv.com

INNS/LODGES/RESORTS

THE CARRIAGE HOUSE REUSTLE PRAYER ROCK/ VINEYARDS INN

960 Cal Henry Road
Roseburg, OR 97471
(541) 459-6060
www.reustlevineyards.com

ILLAHEE INN

1557 Bar L Ranch Road
Glide, OR 97443
(541) 580-2344
www.illaheeinnet.net

STEAMBOAT INN

42705 N Umpqua Highway
Idleyld Park, OR 97447
(541) 498-2230 or (800) 840-8825
www.thesteamboatinn.com

EXTENDED STAY - EXECUTIVE

THE VENUE SUITES

621 SE Cass Avenue
Roseburg, OR 97470
(541) 673-5474
www.venuesuites.com

HOTELS/MOTELS

COMFORT INN ROSEBURG

1539 NW Mulholland Drive
Roseburg, OR 97470
(541) 957-1100
www.choicehotels.com

HAMPTON INN & SUITES

1620 NW Mulholland Drive
Roseburg, OR 97470
(541) 492-1212
www.hamptoninn.com

HOLIDAY INN EXPRESS

375 W Harvard Avenue
Roseburg, OR 97470
(541) 673-7517 or (888) 465-4329
www.hiexpress.com/roseburgor-ex

SUPER 8 ROSEBURG

3200 NW Aviation Drive
Roseburg, OR 97470
(541) 672-8880
www.stayinroseburg.com



CAMPING/RV PARKS

DOUGLAS COUNTY CAMPGROUNDS

(various locations)
Douglas County Parks Department
(541) 957-7001
www.douglascounty-oregon.us/265/Parks

DOUGLAS COUNTY FAIRGROUNDS RV PARKS

2110 SW Frear Street
Roseburg, OR 97470
(541) 957-7010
www.douglasfairgrounds.com

RISING RIVER RV PARK

5579 Grange Road
Roseburg, OR 97471
(541) 679-7256
www.risingriverrv.com

UMPQUA NATIONAL FOREST CAMPGROUNDS

(various locations)
Umpqua National Forest
US Dept. of Agriculture/Roseburg Office
(541) 672-6601
www.fs.usda.gov/umpqua



**TOP
5**

PRIVATE SECTOR DOUGLAS COUNTY EMPLOYERS

ROSEBURG FOREST PRODUCTS
1600 Employees

CHI MERCY HEALTH
1010 Employees

SEVEN FEATHERS CASINO RESORT
1000 Employees

SWANSON GROUP
765 Employees

ORENCO
425 Employees

The Land of Umpqua is well-known for its world-class wood products industry. But the region also has diversified with rapid growth in the professional services and retail industries. The service industries with the most growth since 1990 are hospitality and recreation, business services and health services. In addition, the Land of Umpqua is enjoying growth in the small-to medium-sized manufacturing sector. The following major industries continue to play a vital role in the economic health of our region.



MANUFACTURING

Douglas County is attracting more companies

In recent years Douglas County has attracted a number of companies engaged in manufacturing, a growing job providing sector. These businesses may well have located to other parts of the country, but chose to bring these family-wage jobs to Roseburg and Douglas County. The selection of our community is due to a number of noteworthy characteristics, including varied transportation infrastructure, availability of a qualified workforce, suitable industrial sites and, most importantly, the lifestyle Land of Umpqua residents enjoy.



TIMBER

Roseburg is nestled among some of the world's richest timberland

Roseburg became a major lumber producer during the post-World War II housing boom. Today, Douglas County is a major, international producer of wood products. The county boasts 2.8 million acres of forest lands; 41 percent of these lands are privately owned. While Roseburg's economy continues to diversify, the timber industry remains a key component of the community's overall well-being. Twelve percent of the county's workforce is employed in the forestry, logging and wood product manufacturing industries, accounting for 22 percent of the county's total payroll.

FARMING & RANCHING

Agricultural industries thrive in Douglas County

The agricultural industry thrives in Roseburg's versatile climate, contributing about \$103 million to the local economy. Major crops include: berries, nuts, apples, melons and, of course, grapes. Douglas County also is a producer of sheep, cattle and a variety of other livestock.



HEALTHCARE

Top rated quality with steady growth

One of our fastest-growing industries is health care. Not just important for the jobs it adds to the local economy but, for the role it plays in supporting existing and attracting new business. For more information on healthcare, see page 45.



TOURISM

Area attractions continue to draw more visitors each year

Many of our residents first discovered the Land of Umpqua as visitors. Our central location to many recreation destinations and attractions, world class fishing, internationally-recognized wines and Interstate 5 access draw an ever-growing number of visitors each year. The Roseburg Area Chamber of Commerce built a state-of-the-art, informative center to welcome those visitors to the Land of Umpqua. Be sure and check out all the great attractions, activities and events we have to offer both residents and visitors alike.

ROSEBURG AREA CHAMBER OF COMMERCE

410 SE SPRUCE STREET
ROSEBURG, OR 97470
(541) 672-2648
ROSEBURGCHAMBER.COM

The Roseburg Area Chamber of Commerce ("RACC") is the largest business membership organization in Douglas County. As the region's leading advocate for business, the RACC works with business and community partners to create a strong local economy, promote local business, promote the Land of Umpqua as a visitor destination and represent business interest through political activity.

The chamber provides business with promotional opportunities, business educational and training programs and quality business networking opportunities, to name a few. The chamber works with many business assistance programs locally and statewide.

The Roseburg Area Chamber of Commerce maintains an online general business resource guide and specialty resource guides and information. Member businesses also have the opportunity to participate in a variety of business information, education and leadership programs, events and trainings.

Additional resources including the city of Roseburg and Douglas County, the employment department and private employee staffing agencies can be found on the chamber's website.

INDUSTRIAL PARKS

For more information about the availability in Douglas County industrial parks call (541) 672-6728.

DOUGLAS COUNTY INDUSTRIAL DEVELOP- MENT BOARD (DCIDB)

900 SE DOUGLAS AVENUE
ROSEBURG, OR 97470
(541) 672-6728
DOUGLASCOUNTY-OREGON.US

The Douglas County Industrial Development Board advises the Douglas County Board of Commissioners and works closely with CCD Business Development Corporation and UEDP. It oversees industrial park development and can provide some funding for local job producing economic development projects and industrial infrastructure. There are four county owned industrial parks: Oak Creek, Sutherlin Industrial Park, South Umpqua Valley and Bolon Island, as well as other individual properties around the county.

CCD BUSINESS DEVELOPMENT CORPORATION

2270 AVIATION DRIVE
SUITE 4
ROSEBURG, OR 97470
(541) 672-6728
CCDBUSINESS.ORG

A federally recognized Economic Development District for Coos, Curry and Douglas counties, CCD's objective is to promote job-generating business expansion. Services to businesses include:

- Business lending – SBA & business Oregon, EDA, UDSDA
- Management consulting for business start-ups, acquisitions and expansions
- Enterprise zone management offering tax abatement incentives to businesses
- Working with firms that are considering relocating to or expanding in the area.

UMPQUA COMMUNITY COLLEGE

1140 UMPQUA COLLEGE RD
ROSEBURG, OR 97470
(541) 440-4600
UMPQUA.EDU

UCC is a comprehensive public community college. The college serves more than 13,500 unique students each year, offering transfer programs and strong career and technical education (CTE) programs in a variety of high-demand fields such as business, computer science, engineering, human services and nursing.

UCC also provides workforce development, a truck driving program and other career training programs imperative to local business. The college works closely with local businesses and professionals to ensure students are learning the skills needed to be successful in the workforce.

UCC SMALL BUSINESS DEVELOPMENT CENTER

522 SE WASHINGTON AVENUE
ROSEBURG, OR 97470
(541) 440-7824
UMPQUA.EDU/SBDC

Umpqua Small Business Development Center provides business assistance programs, classes and one-on-one counseling under the US Small Business Administration and Umpqua Community College. UCC's SBDC is designed to help Douglas County residents start-up, expand or transition their business.

Services include: Assistance with business financial analysis and strategic planning, basic and in-depth business management fundamentals, CCB pre-license training and exam, real estate brokers re-license, Quickbooks workshops and more.

BUSINESS DIRECTORY

Alphabetical

All addresses listed are located in Roseburg unless otherwise noted

A

A-1 AUTO GLASS

Dennis Clark
1590 NE Diamond Lake Blvd., 97470.....(541) 672-7095
www.a-1autoglass.com

ABBY'S LEGENDARY PIZZA

Doug Phillips
2722 NE Stephens St., 97470(541) 672-1184
www.abbys.com

ADDCOX HEATING CENTER

Dave Bastian
831 NW Highland St., 97470.....(541) 672-6473
www.addcox.com

ADVANCED SKIN CENTER

Jana Garcia
1813 W Harvard Ave., Ste. 310, 97471.....(541) 672-7546
www.ascdermatology.com

ALL-PRO REALTY ADVISORS

Melony Marsh.....(541) 696-1600
1600 NW Garden Valley Blvd., Ste. 120, 97471
www.apr-advisors.com

ALPHA HEATING & AIR

Alex Wiese
1580 Green Siding Rd., 97471.....(541) 378-4220
www.roseburg.alphaheatac.com

AMERICAN HOME LENDING, LLC

Sandy Bratton
1600 NW Garden Valley, Ste. 100, 97471(541) 957-7777
www.oregonloans.com

AMERITITLE, INC.

Barry Robinson
1495 NW Garden Valley Blvd., 97471.....(541) 672-6651
www.amerititle.com

ASHLEY HOME STORE

Julie Gillis
1440 NW Garden Valley Blvd., #100, 97471 ... (541) 900-1555
www.ashleyhomestore.com

ALEXIS ATCHINSON, DDS

Alexis Atchinson
1729 W. Harvard Ave., Ste. 1, 97471(541) 673-0131
www.dralexisdds.com

ATRIO HEALTH PLANS

Theresa Derby
2270 NW Aviation Dr., Ste. 3, 97470.....(541) 492-2154
www.atriohp.com

AVISTA UTILITIES

Jeff Schwendener
1404 SW Green Siding Rd., 97470(541) 440-1168
www.myavista.com

AVIVA HEALTH

KC Bolton
150 Kenneth Ford Dr., 97470(541) 672-9596
www.umpquachc.org

B

BASSETT-HYLAND ENERGY CO.

Roger Bassett
127 NW Garden Valley Blvd., 97470(541) 673-5536
www.bassettthyland.com

BELL SISTER FLATS

Terry Bentley
620 SE Main St., 97470(541) 580-6302
www.bellsisterflats.com

BENTLEY WELDING

Brian Morrow
1541 Austin Rd., 97471.....(541) 679-7849

PAUL L. BENTLEY, ARCHITECT, A.I.A., PC

Paul L. Bentley
615 SE Jackson St., 97470.....(541) 672-0273
www.paulbentleyarchitect.com

BEST MED PRIMARY CARE / BEST MED URGENT CARE (BEST MED CLINICS)

Lacy Hanussak
1740 NW Goetz St., 97471(541) 672-4789
www.bestmedclinics.com/oregon/

BIG O TIRES OF ROSEBURG

Chris Boice
2545 NW Stewart Pkwy., 97471(541) 672-2848
www.bigotires.com

BIGFOOT BEVERAGES / PEPSI-COLA BOTTLING OF ROSEBURG

Don Smith
301 Pepsi Rd., Winston, OR 97496.....(541) 679-6751
www.pepsiroseburg.com

BLACK PEARL PAVING & EXCAVATION

Casey Moore
835 Sheridan St., 97470.....(541) 784-7990
www.bp541.com

BOWERS INDUSTRIAL, INC.

Amber Bowers
1941 NW Mulholland Dr., 97470.....(541) 672-6246
www.bowersindustrial.com

BRENNON CLAUS, REALTOR

Brennon Claus
Oregon Life Homes
603 SE Jackson St., 97470.....(541) 530-1615

BUDGET BLINDS

Patrick Milliman
2460 Loma Vista Dr., 97471.....(541) 216-4723
www.budgetblinds.com

BUNNELL'S OVERHEAD DOOR, INC.

Pam Bunnell
991 NW Highland St., 97470.....(541) 673-4035
www.bunnelloverhead.com

C

CADDOCK ELECTRONICS, INC.

17271 N. Umpqua Highway, 97470(541) 496-0700
www.caddock.com

CARDINAL SERVICES, INC.

Donna Arnold
2375 NW Stewart Pkwy., 97471.....(541) 672-8466 ext.2301
www.cardinal-services.com

CASCADE COMMUNITY CREDIT UNION

Shelby Beattie
1123 W Harvard Ave., 97471.....(541) 464-6850
www.cascadecu.org

CCD BUSINESS DEVELOPMENT CORP.

Theresa Haga
2270 Aviation Dr., Ste. 4, 97470(541) 672-6728
www.ccdbusiness.com

CENTRAL OREGON & PACIFIC RAILROAD

John Bullion
333 SE Mosher Ave., 97470.....(541) 941-3709
www.gwrr.com

CHI MERCY HEALTH

Kelly Morgan
2700 NW Stewart Pkwy., 97471(541) 673-0611
www.mercyrore.org

CHI'S GARDEN RESTAURANT

Nikki Chi
1023 NE Stephens St., 97470(541) 464-8395
www.chisgardenrestaurant.com

COASTAL FARM & RANCH

Kris Riggins
782 NE Garden Valley Blvd., 97470(541) 957-0741
www.coastalfarm.com

COMFORT INN ROSEBURG

Amit Teja
1539 NW Mulholland Dr., 97470.....(541) 957-1100

COMMUNITIES FOR HEALTHY FORESTS

Javier Goirigolzarri
PO Box 400, 97470.....(541) 957-9001
www.communitiesforhealthyforests.org

COMMUNITY CANCER CENTER

Tammy Turner
2880 NW Stewart Pkwy, Ste 100, 97471(541) 673-2267
www.roseburgcancercare.com

CON-VEY

Dave Larecy
526 NE Chestnut St., 97470(541) 672-5506
www.con-vey.com

COOPER'S PEST CONTROL

Mark Conklin
1608 NE Vine St., 97470(541) 673-0363

COSTCO WHOLESALE

Kris Riggins
4141 NE Stephens St., 97470(541) 378-0020
www.costco.com

CRADAR ENTERPRISES, INC.

Peggy Guido
1051 Melrose Rd., 97471(541) 673-3268
www.cradar.com

CRYSTAL FALLS

Adriel Camacho
4390 NE Douglas Ave., 97470(541) 672-0799
Toll Free(800) 378-0799
www.crystalfalls.water.com

CSO FINANCIAL

Mary Inscore
1229 SE Stephens St., 97470(541) 673-6661
www.creditservicescso.com

D**D.A. DAVIDSON & CO.**

Joshua Huckins(541) 677-7600
Toll Free(866) 236-3158
1495 NW Garden Valley Blvd., Ste. 201, 97471
www.dadavidson.com

DOUGLAS COUNTY

Tim Freeman
1036 SE Douglas Ave., 97470(541) 440-4201
www.co.douglas.or.us

DOUGLAS COUNTY ASSOCIATION OF REALTORS

Stephanie Bilick
3510 NE Edenbower Blvd., 97470(541) 672-0563
www.douglascountyrealtors.org

DOUGLAS COUNTY DISTRICT ATTORNEY'S OFFICE

Richard L. Wesenberg, Jr.
1036 SE Douglas Ave., Rm 204, 97470(541) 440-4388
Toll Free(800) 273-8756
www.co.douglas.or.us

DOUGLAS COUNTY FAIRGROUNDS

Dan Hults
2110 SW Frear St., Exit 123, 97471(541) 957-7010
www.douglasfairgrounds.com

DOUGLAS COUNTY FARMERS CO-OP

Melvin Burke
3171 NE Stephens St., 97470(541) 673-0601
www.dcfarmers.com

DOUGLAS ELECTRIC COOPERATIVE

Keith Brooks
1981 NE Stephens St., 97470(541) 673-6616
www.dec.coop

DOUGLAS FAST NET

Todd Way
2350 NW Aviation Dr., 97470(541) 673-4242
www.douglasfast.net

DOUGLAS TIMBER OPERATORS

Matt Hill
3000 NW Stewart Pkwy., Ste. 104, 97471(541) 672-0757
www.doug timber.org

DUTCH BROS. COFFEE

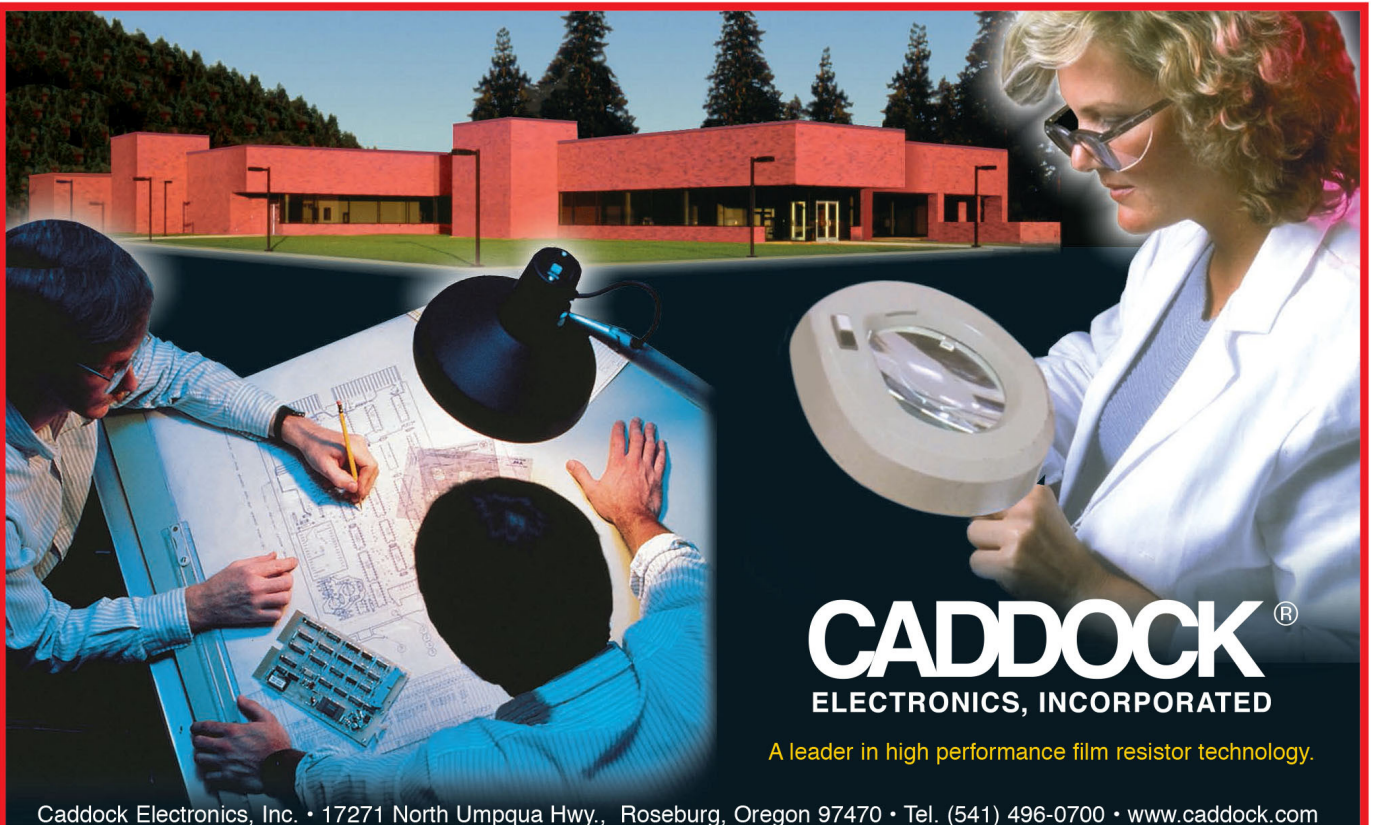
Clayton Reinhart
PO Box 1730, 97470(541) 430-2438
www.dutchbros.com

E**ELIN MILLER CONSULTING, LLC**

Elin Miller(541) 459-4488
14300 Garden Valley Rd., Umpqua OR 97486
www.elinmiller.com

ELWOOD STAFFING

Rheanna Mosier
741 NE Stephens St., Ste. 1, 97470(541) 673-3200
www.elwoodstaffing.com



CADDOCK[®]
ELECTRONICS, INCORPORATED

A leader in high performance film resistor technology.

Caddock Electronics, Inc. • 17271 North Umpqua Hwy., Roseburg, Oregon 97470 • Tel. (541) 496-0700 • www.caddock.com

ENERGY TRUST OF OREGON

Emily Findley(866) 368-7878
 421 SW Oak St., Ste. 300, Portland OR 97204
www.energytrust.org

RICHARD EMBERTSON, CPA

Richard Embertson
 2226 NW Kline St., 97471(541) 673-3007
www.embertsoncpa.com

EUGENE AIRPORT

Cathryn Stephens
 28855 Lockheed Dr., Eugene OR 97402(541) 682-5430
www.flyEUG.com

EVERGREEN FAMILY MEDICINE

Kim Tyree
 1937 W Harvard Ave., 97471(541) 677-7200
www.evergreenfamilymedicine.com

EXPOSURE

Joe Pate
 1224 NE Walnut St., PMB 401, 97470(207) 992-3976
www.exposureshows.com

EXPRESS EMPLOYMENT PROFESSIONALS

Willis Cook
 741 NE Garden Valley Blvd., 97470(541) 673-3332
www.expressroseburg.com

F**FAMILY DEVELOPMENT CENTER**

Marsh LaVerne
 300 Jerry's Dr., 97470(541) 673-4354
www.fdcroseburg.org

FAMILY TREE MEDICAL CLINIC

Mark Agsten
 2508 NW Medical Park Dr., 97471(541) 673-5225
www.familytreemc.com

FARMERS INSURANCE - JOHN MURPHY

John Murphy
 652 W Umpqua St., 97471(541) 672-4004
www.farmers.com

FCC COMMERCIAL FURNITURE

Gary Crowe
 8452 Old Highway 99N, 97470(541) 673-3351
www.fcc-create.com

FIRST AMERICAN TITLE INSURANCE COMPANY

Emily McKay(541) 672-5555
 1700 NW Garden Valley Blvd., Ste 204, 97471
www.firstam.com

FIRST COMMUNITY CREDIT UNION (EAST)

Heather Danielle
 1771 NE Stephens St., 97470(541) 673-6613
www.myfirstccu.org

FIRST COMMUNITY CREDIT UNION (WEST)

Amanda Lenihan
 1960 W Harvard Ave., 97471(541) 957-9099
www.myfirstccu.org

FIRST INTERSTATE BANK

Tabbitha Layman(541) 672-7712
 780 NW Garden Valley Blvd., Ste. 61, 97471
www.firstinterstatebank.com

FISHER'S HEARTH & HOME

Chris & Barb Foster
 2583 W Harvard Ave., 97471(541) 672-0306
www.fishershearthandhome.com

FLURY SUPPLY CO., INC.

Jeff Flury
 3021 NE Stephens St., 97470(541) 672-3371
www.flurysupplyco.com

THE FORD FAMILY FOUNDATION

Anne C. Kubisch
 1600 NW Stewart Pkwy., 97471(541) 957-5574
www.tfff.org

FRONTIER VILLAGE

Charlotte Stiles
 PO Box 1488, 97470(541) 672-3919

G**GENE'S BRAKE & ALIGNMENT**

Jay Taylor
 1540 NE Diamond Lake Blvd., 97470(541) 672-9491

GERRETSEN BUILDING SUPPLY

Uve Kummrow
 1900 NE Airport Rd., 97470(541) 672-2636
www.gerretsen.com

GIRARDET

Marc Girardet
 895 Reston Rd., 97471(541) 679-7252
www.girardetwine.com

GOODWILL INDUSTRIES, SOUTHERN OREGON

Tehren Randleas
 2455 SW Stewart Pkwy., 97471(541) 677-0275
www.sogoodwill.org

GRAPHIC DIMENSIONS, INC.

Clyde Lloyd(541) 672-3812
 2405 NE Diamond Lake Blvd., Ste. 82, 97470
www.graphicdimensions.us

H**HAMPTON INN & SUITES**

Carla Baker
 1620 NW Mulholland Dr., 97470(541) 492-1212
www.hamptoninn.com

HARRY RITCHIES JEWELER'S, LLC

Ashley Page(458) 802-4480
 1122 NW Garden Valley Blvd., Ste. 401, 97471
www.harryritchies.com

HEARD FAMILY, LLC

Richard Heard
 578 Rogers Rd., 97471(541) 459-7529
www.heardfarmsinc.com

HOLIDAY INN EXPRESS

Doug Radford
 375 W Harvard Ave., 97470(541) 673-7517
www.hiexpress.com/roseburgor-ex

HOPE CLINIC FOR WOMEN

Destiny Molatore
 1425 W Harvard Ave., 97471(541) 672-2609
www.hopeclinicroseburg.com

HOUSING AUTHORITY OF DOUGLAS COUNTY

Janeal Kohler
 902 W Stanton St., 97471(541) 673-6548 ext. 115
www.hadcor.org

HPS ELECTRICAL APPARATUS

Steve Skenzick
 3801 NW Stewart Pkwy., 97470(541) 673-6525
www.hpselectric.com

HUCREST FAMILY & IMPLANT DENTISTRY

Dr. Jeffrey Kobernik
 1600 NW Hughwood Ct., 97471(541) 673-6525
www.roseburgsmiles.com

I**I. E. ENGINEERING, INC.**

Alex Palm
 809 SE Pine St., 97470(541) 673-0166
www.ieengineering.com

ILLAHEE INN

Michelle Kidd(541) 580-2344
 170 Wild Thyme Ln., Glide, OR 97443
www.illaheein.net

INDUSTRIAL TIRE, INC.

Alvin Shivers
 4100 Old Highway 99S, 97471(541) 679-6333
www.industrialtire.com

IRELAND BROTHERS

Charles Ireland, III(541) 863-5241
 361 N Old Pacific Highway, Myrtle Creek, OR 97457
www.irelandtrucking.com

J**JOE'S TOWING & RECOVERY, LLC**

Joseph Andrews
 4440 NE Douglas Ave., 97470(541) 672-4388
 Toll Free(877) 220-8697
www.joestowing.net

K**KEZI 9 NEWS**

Betsy Yraguen
 PO Box 629, 97470(541) 580-7447
www.kezi.com

KMTR NewsSource 16

Kathie Dougherty(541) 746-1600
 3825 International Ct., Springfield OR 97477
www.kmtr.com

KPIC - TV

655 W Umpqua St., 97471(541) 672-4481
www.kpic.com

KELLER LUMBER COMPANY

Mike Keller
4418 Keller Rd., 97470.....(541) 672-6528
www.kellerlumbercompany.com

KELLEY CONNECT

David Clark
693 NE Stephens St., Ste. B, 97470.....(541) 214-2650
Toll Free.....(800) 586-4624
www.kelleyconnect.com

KNIFE RIVER MATERIALS

Pete Carhart
186 Beaver State Rd., 97471.....(541) 679-6744
www.kniferiver.com

L**LAMAR OUTDOOR ADVERTISING**

Ward Farrell.....(541) 461-0972
698 12th St. SE, Ste. 130, Salem, OR 97301
www.lamar.com

LAND MARK SURVEYING, INC.

Mark Heimbürger
3329 NE Stephens St., 97470.....(541) 677-9400

MIKE H. LEE, DDS, PC

Mike Lee
1813 W Harvard Ave., Ste. 221, 97471.....(541) 672-2461
www.drmikeleedental.com

CHARLES F. LEE, P.C.

Attorney at Law
Charles Lee
880 SE Jackson St., 97470.....(541) 672-0800

LINUS OAKES VILLAGE, CHI LIVING COMMUNITIES

Tanya Hollamon
2665 Van Pelt Blvd., 97471.....(541) 677-4800
www.homeishere.org

LITHIA ROSEBURG AUTO CENTER

Tammy Yann
1650 NE Stephens St., 97470.....(541) 673-4485

LONE ROCK RESOURCES

Toby Luther
2323 Old Highway 99S, 97470.....(541) 673-0141
www.lrtco.com

LONG'S BUILDING SUPPLY

Kristy Currie
3960 Old Highway 99S, 97471.....(541) 679-6117

LONG'S FLOWERS

Debbie Tucker
864 NW Garden Valley Blvd., 97471.....(541) 673-0929
www.longsfowers.com

LOVE'S TRAVEL STOPS & COUNTRY STORE

Isaiah Morris
280 Grant Smith Rd., 97471.....(541) 679-1916
www.loves.com

LOWE'S HOME IMPROVEMENT

Shane Russell
3300 NW Aviation Dr., 97470.....(541) 464-3720
www.lowes.com

M**MAC'S TRACKS MODEL RAILROADING**

Lachlan Mackinnon
839 SE Cass Ave., 97470.....(541) 440-8942
www.macstracksrailroading.com
MAKENA BEACH TAN
Shelley Macbeth
940 NW Garden Valley Blvd., Ste. 102, 97471..(541) 677-7264
www.makenatan.com

MARCO PHARMA INTERNATIONAL, LLC

Ana Marx
851 NW Highland St., 97470.....(541) 677-8300 ext.124
Toll Free.....(800) 999-3001
www.marco-pharma.com

MCDONALD'S RESTAURANT / 6 KSCAMPBELL, LLC

Shane Campbell
536 NE Winchester St., Ste. 106, 97470.....(541) 672-8105

MCGOVERN METALS COMPANY, INC.

Jim McGovern
3801 Old Highway 99S, 97471.....(541) 679-7012

MCMENAMINS ROSEBURG STATION PUB & BREWERY

Melissa Smith
700 SE Sheridan St., 97470.....(541) 672-1934
www.mcmenamins.com

MEADOW CREEK RETIREMENT COMMUNITY

Trudie Boyd
2551 NW Edenbower Blvd., 97471.....(541) 464-8405

MEGABYTE COMPUTER SERVICES

Christine Mackey
3158 W Gilbert Ave., 97471.....(541) 957-8970
www.megabyteinc.com

N**NEUNER DAVIDSON & CO.**

Jeff Cooley
2500 W Harvard Ave., 97470.....(541) 672-4886
www.neunerdavidson.com

NORTHWEST COMMUNITY CREDIT UNION

Staci Gregory
2335 NW Kline St., 97471.....(541) 673-4461 ext.5501
www.nwcu.com

NORTHWEST COMPOUNDING PHARMACY

Marty Hiers
1350 NE Stephens St., Ste. 42, 97470.....(541) 672-8399
www.nwcompounding.co

NORTHWEST FARM CREDIT SERVICES

Margaret Fabrizio
2222 NW Kline St., 97471.....(541) 464-6700
www.northwestfcs.com

NOVUS GLASS

Stephanie Fritz
2842 NE Stephens St., 97470.....(541) 957-9916
www.novusglass.com/en-us/shop/roseburg

O**OAK GROVE RETIREMENT COMMUNITY**

Trudie Boyd
2403 NW Edenbower Blvd., 97471.....(541) 673-3836

OLSSON INDUSTRIAL ELECTRIC, INC.

Eric Olsson
1919 Laura St., Springfield, OR 97477.....(541) 747-8460
www.olssonelec.com

ONE PEAK MEDICAL CLINIC

Tanya Babbitt.....(541) 464-0788
1700 NW Garden Valley Blvd., Ste. 201, 97471
www.peakmedicalclinic.com

OREGON COACH CRAFTERS RV

Christopher Breslin
2598 Old Hwy 99 S., 97471.....(541) 229-4678

THE OREGON COMMUNITY FOUNDATION

Patrick Hosfield.....(541) 431-7099
440 E Broadway Ave., Ste. 160, Eugene OR 97401
www.oregoncf.org

OREGON DEPARTMENT OF TRANSPORTATION

Darrin Neavill
3500 NW Stewart Pkwy., 97470.....(541) 957-3500
www.odot.state.or.us

OREGON EYE CONSULTANTS

Jackie Gatewood.....(541) 687-1927
2510 NW Edenbower Blvd. Ste. 146, 97471
www.oregoneyeconsultants.com

OREGON PACIFIC BANK

Anita Cox
2555 NW Edenbower Blvd., 97471.....(541) 677-9454
www.opbc.com

OREGON TOOL & SUPPLY

Milo Anderson
276 SE Stephens St., 97470.....(541) 672-1935
www.oregontoolandsupply.com

OVERHEAD DOOR COMPANY OF ROSEBURG

Jeff Wikstrom
1045 NE Alder St., 97470.....(541) 673-4802
www.odcroseburg.com

P**PACIFIC POWER**

Sam Carter
4025 Old Highway 99S, 97471.....(541) 679-3653
www.pacificpower.net

PACKAGE DEPOT

Kelsey Schwendiman
1224 NE Walnut St., 97470.....(541) 673-0798
www.packagedepotroseburg.com

PARTNERSHIP FOR THE UMPQUA RIVERS

Eric Riley
3012 W Harvard Ave., 97471.....(541) 673-5756
www.umpquarivers.org

Phoenix School of Roseburg

Thomas McGregor
3131 NE Diamond Lake Blvd., 97470.....(541) 673-3036
www.roseburgphoenix.com

PINNACLE ENGINEERING, INC.
 Kim Swenson
 4276 Old Hwy 99S, 97471.....(541) 440-4871
www.pinnacleengineeringinc.com

PLANET FITNESS ROSEBURG
 Richard Padilla.....(541) 537-4392
 2100 NW Stewart Parkway, Ste. 120, 97471
www.planetfitness.com

R

RANDY C. RUBIN, ATTORNEY AT LAW, P.C
 Randy Rubin
 766 SE Kane St., 97470.....(541) 677-7102
www.randyrubin.com

REUSTLE - PRAYER ROCK VINEYARDS
 Stephen Reustle
 960 Cal Henry Rd., 97471.....(541) 459-6060
www.reustlevineyards.com

RISING RIVER RV PARK
 Karina Torres
 5579 Grange Rd., 97471.....(541) 679-7256
www.risingriverrv.com

RIVER PLACE MHC
 Michael Hugg
 117 Deshutes Ln., 97471.....(541) 670-3927
www.riverplaceipg.com

RIVERVIEW TERRACE
 Daryl Wentland
 1970 W Harvard Ave., 97471.....(541) 672-2500
 Toll Free.....(800) 888-5994
www.riverviewterrace.com

ROGUE CREDIT UNION
 Chelsea Buckbee
 1337 NE Stephens St., 97470
 1390 NE Garden Valley Blvd., 97471
 Toll Free.....(800) 856-7328
www.roguecu.org

ROOT FAMILY INSURANCE, LLC
 John Root
 1490 NW Valley View Dr., Ste. 300, 97471.....(541) 673-0113
www.healthinsuranceroseburg.com

ROSEBURG CINEMAS
 Daryn McLennan
 1750 NW Hughwood Ave., 97471.....(541) 440-2280
www.roseburgcinemas.com

CITY OF ROSEBURG
 Nikki Messenger
 900 SE Douglas Ave., 97470.....(541) 492-6700
www.cityofroseburg.com

ROSEBURG DISPOSAL COMPANY
 Dori John
 1308 NW Park St., 97470.....(541) 673-7122
www.roseburgdisposal.com

ROSEBURG FOREST PRODUCTS
 3660 Gateway St., Springfield, OR 97477
 P.O. Box 1088, Roseburg, 97470.....(541) 679-3311
www.roseburg.com

ROSEBURG GLASS COMPANY
 Terry Bagley
 719 SE Spruce St., 97470.....(541) 672-2685
 Toll Free.....(800) 349-2685
www.roseburgglass.com

ROSEBURG PUBLIC SCHOOLS
 Jared Cordon
 1419 NW Valley View Dr., 97471.....(541) 440-4014
www.roseburg.k12.or.us

ROSEBURG U-HAUL MOVING & STORAGE
 Michelle Muir
 1182 NE Stephens St., 97470.....(541) 672-6864
www.uhaul.com

ROSEBURG URBAN SANITARY AUTHORITY
 Jim Baird
 1297 NE Grandview Dr., 97470.....(541) 672-1551
www.rusa-or.org

S

SAIF
 Katie Sesepasara.....(541) 857-4200
 990 N Phoenix Rd., Ste. 101, Medford OR 97504
www.saif.com

SELECTEMP EMPLOYMENT SERVICES
 Marissa Logan
 250 NE Garden Valley Blvd., Ste. 15, 97470... (541) 440-4844
www.selectemp.jobs

SHERM'S THUNDERBIRD
 John Robertson
 2553 NW Stewart Pkwy., 97471.....(541) 673-8525
www.shermsmarkets.com

SIMS ELECTRIC, INC.
 Andy Alberding
 721 SE Oak Ave., 97470.....(541) 673-5521
www.simselectric.com

SOUTHERN OREGON CREDIT SERVICE, INC.
 Angela Brown
 536 NE Winchester St., Ste. D, 97470.....(541) 464-8414
 Toll Free.....(800) 283-0222
www.socredit.com

SOUTHWESTERN OREGON WORKFORCE INVESTMENT BOARD (SOWIB)
 Rena Langston.....(541) 863-2897
 990 S 2nd Street, Coos Bay OR 97420
www.sowib.org

SPRING HILL PRESS, LLC
 Margo May.....(417) 466-0019
 217 N Market St., Ste. A., Mt. Vernon MO 65712
www.springhillpress.com

STAPLES, THE OFFICE SUPERSTORE
 Jay Audiss
 1414 NW Valley View Dr., 97471.....(541) 673-7080
www.staples.com

STEAMBOAT INN
 Melinda Woodward.....(541) 498-2230
 Toll Free.....(800) 840-8825
 42705 N. Umpqua Highway, Idleyld Park OR 97447
www.thesteamboatinn.com

SUBWAY ON THE PARKWAY, INC.
 Emma Lee
 2345 NW Stewart Pkwy., 97471.....(541) 673-2663

SUNRISE ENTERPRISES, INC.
 Jim Wilson
 423 NE Winchester St., 97470.....(541) 673-0195, ext. 171
www.sunriseenterprisesinc.com

SUPER 8 - ROSEBURG
 Kat Wise
 3200 NW Aviation Dr., 97470.....(541) 672-8880
www.stayinroseburg.com

SWANSON GROUP, INC.
 Steve Swanson
 2635 Old Highway 99S, 97470.....(541) 832-1121
www.swansongroup.biz

MARY SYKES, CPA, PC
 Mary Sykes
 1730 NW Valley View Dr., 97471.....(541) 673-3445

T

TEN DOWN BOWLING & ENTERTAINMENT/SPLITZ FAMILY GRILL
 Kristin Smith
 2400 NE Diamond Lake Blvd., 97470.....(541) 672-3601
www.tendownbowling.com

TERRAFIRMA FOUNDATION SYSTEMS
 Ryan Beckley
 761 NE Gardern Valley Blvd., 97470.....(866) 486-7196
www.terrafirma.com

TERRAIN TAMERS CHIP HAULING, INC.
 Brant Boyer
 533 Dyke Rd., Dillard, OR, 97432.....(541) 672-6583
www.terraintamers.com

TINKER'S PUMP SERVICE, INC.
 Terry Tinker
 33 Kester Rd., 97470.....(541) 440-2323

TRUE NORTH RESTORATION
 Noah Witt
 3986 Carnes Rd., 97471.....(541) 673-1333
www.gotruenorthoregon.com

TYREE OIL, INC.
 Dameon Barrows
 1744 NE Diamond Lake Blvd., 97470.....(541) 673-6215
www.tyreeoil.com

U

UMPQUA BANK
 Neal Brown
 445 SE Main St., 97470.....(541) 440-3963
 780 NW Garden Valley Blvd., Ste. 57, 97471.. (541) 440-3926
 1790 NW Garden Valley Blvd., 97471.....(541) 440-8870
 Toll Free.....(866) 486-7782
www.umpquabank.com

UMPQUA COMMUNITY COLLEGE
 Dr. Rachel Pokrandt
 1140 Umpqua College Rd., 97470.....(541) 440-4600
www.umpqua.edu

UMPQUA DAIRY PRODUCTS CO.
 Marty Weaver
 333 SE Sykes St., 97470.....(541) 672-2638
www.umpquadairy.com

UMPQUA HOMES INCORPORATED
 Natasha Atkinson
 662 SE Jackson St., 97470.....(541) 673-2240
www.umpquahomes.org

UMPQUA INSURANCE AGENCY
Guy Kennerly
808 SE Lane St., 97470(541) 672-3348
www.umpquainsurance.com

UMPQUA NATIONAL FOREST
Alice Carlton
2900 NW Stewart Pkwy., 97471(541) 672-6601
www.fs.usda.gov/umpqua

UMPQUA SAND & GRAVEL
Kelly Guido
640 Shady Dr., 97471(541) 673-1088
www.umpquasand.com

UMPQUA SMALL BUSINESS DEVELOPMENT CENTER
Christopher Glenn
522 SE Washington Ave., 97470(541) 440-7824
www.umpqua.edu/sbdc

UMPQUA VALLEY FIRE SERVICES
Doug Schulze
1353 SE Pine St., 97470(541) 229-0911
Toll Free(800) 842-3300
www.uvfs.net

UMPQUA VALLEY TRACTOR
Guy Kennerly
2165 NE Stephens St., 97470(541) 672-3369
www.uvtractor.com

UNITED COMMUNITY ACTION NETWORK
Shaun Pritchard
280 Kenneth Ford Dr., 97470(541) 672-3421
Toll Free(800) 301-8226
www.ucanap.org

THE UPS STORE
Kevin Peng
3019 Stewart Pkwy., Ste. 304, 97471(541) 672-5699
www.theupsstorelocal.com/5034



VALLEY CREDIT SERVICE, INC.
Alice Ray - Graham(541) 654-3530
Toll Free(800) 452-0317
626 Appleblossom Ave NE., Keizer OR 97303
www.valley-creditservice.com

VALLEY TEL SERVICE, INC.
Travis Feltz
2210 NE Stephens St., 97470(541) 673-6030
www.valley-tel.com

THE VENUE SUITES
Elaine Warren
713 Pine St., 97470(541) 673-5474
www.venuesuites.com

VICTORY BUILDERS, INC.
Thomas Pappas
428 Industrial Dr., 97470(541) 679-8696
Toll Free(888) 679-8696
www.dmvictory.com



WALMART SUPERCENTER
Adam Kobel
2125 NW Stewart Pkwy., 97471(541) 957-8550
www.walmart.com

Feel Welcomed.

At Hampton, it's the extra care we put into everything that's going to make your stay extra awesome. You'll find it at our free hot breakfast. And you'll see it in the personalities of our team members who use their individual styles of hospitality to make you feel extra special.

Hampton Inn and Suites Roseburg
1620 NW Mulholland Drive, Roseburg, OR 97470
541-492-1212 | www.hamptonroseburg.com

hampton.com | 1 800 hampton |

© 2018 Hilton.

WATKINSON LAIRD RUBENSTEIN PC
Brenda Lomonaco
425 SE Jackson St., 97470(541) 673-5528
www.wlrlaw.com

WATTERS & FRYER, CPA, PC
Mike Watters
1490 NW Valley View Dr., Ste. 100, 97471(541) 672-6525
www.roseburgaccounting.com

WESTERN TITLE & ESCROW
Lonni Conopa
2365 NW Kline St., Ste. 101, 97471(541) 672-3388
www.westerntitle.com

WHIT-LOG, INC.
Jerri Ayres
8127 Old Highway 99N, 97470(541) 673-1166
www.whitlogtrailers.com

WICKS EMMETT, LLP
Melinda Mork
358 NE Winchester St., 97470(541) 673-4423
www.wicksemmett.com

WILDLIFE SAFARI
Dan Van Slyke
1790 Safari Rd., Winston, OR, 97496(541) 679-6761 ext.200
www.wildlifesafari.net

WILLAMETTE DENTAL GROUP, PC
Teresa Estes
2365 NW Stewart Pkwy., 97471(855) 433-6825

WINTERGREEN NURSERY, LANDSCAPING & FLORISTS
Michael J. Winters
8580 Old Hwy 99S, Winston, 97496(541) 679-8224
www.wintergreennursery.net

GORDON WOOD INSURANCE & FINANCIAL SERVICES
Kelsey Wood
428 NW Garden Valley Blvd., 97470(541) 672-4466
www.gordonwoodinsurance.com

WORKSOURCE DOUGLAS EMPLOYMENT DEPARTMENT
Robert Petchell
846 SE Pine St., 97470(541) 464-2352
www.workinginoregon.org

ROSEBURG CHAMBER 2022-23 PROGRAMS

2022

SEPTEMBER

- 8 Project Leadership Kickoff
- 19 Membership Meeting Lunch
- 22 9 @ 9

OCTOBER

- 13 Project Leadership Workshop #2
- 17 Membership Meeting Lunch

NOVEMBER

- 14 Project Leadership Workshop #3
- 14 Membership Meeting Lunch
- 14 Economic Forecast 2023

2023

JANUARY

- 9 Membership Meeting Lunch
- 12 Project Leadership Workshop #4

FEBRUARY

- 9 Project Leadership Workshop #5

MARCH

- 9 Project Leadership Workshop #6
- 13 Membership Meeting Lunch
- 23 Annual Awards Event

APRIL

- 10 Membership Meeting Lunch
- 11 Business After Hours
- 13 Project Leadership Workshop #7

MAY

- 11 Project Leadership Workshop #8
- 15 Membership Meeting Lunch

SERVING DOUGLAS COUNTY FOR OVER 100 YEARS

LOCATIONS IN WINSTON & ROSEBURG
WWW.DCFARMERS.COM



CARDINAL
SERVICES, INC.

Come meet our friendly professional Roseburg team at 2375 NW Stewart Pkwy
STAFFING • PAYROLL • CO-EMPLOYMENT
cardinalservices.com

BUSINESS DIRECTORY

By Category

Accountants - Certified Public

Richard Embertson, CPA.....(541) 673-3007
Neuner, Davidson & Co.....(541) 672-4886
Mary Sykes, CPA, PC.....(541) 673-3445
Watters & Fryer, CPA, PC.....(541) 672-6525
Wicks Emmett, LLP.....(541) 673-4423

Advertising & Marketing

Spring Hill Press, LLC.....(417) 466-0019

Agricultural Supplies

Coastal Farm & Ranch.....(541) 957-0741
Douglas County Farmers Co-op.....(541) 673-0601

Airports

Eugene Airport.....(541) 682-5430

Ambulance Services

Umpqua Valley Ambulance (Bay Cities).....(541) 440-7635

Apartments - Extended Stay

The Venue Suites.....(541) 673-5474

Architects

Paul L. Bentley Architect A.I.A., PC.....(541) 672-0273

Attorneys

Charles F. Lee, PC.....(541) 672-0800
Randy C. Rubin, Attorney at Law.....(541) 677-7102
Watkinson Laird Rubenstein PC.....(541) 673-5528

Automobile Sales

Lithia Roseburg Auto Center.....(541) 673-4485

Automobile Services

Gene's Brake & Alignment.....(541) 672-9491

Awnings

Overhead Door Company of Roseburg.....(541) 673-4802

Banks & Banking Associations

First Interstate Bank.....(541) 672-7712
Oregon Pacific Bank.....(541) 677-9454
Umpqua Bank, Main St.....(866) 486-7782

Banquet/Meeting Facilities

Douglas County Fairgrounds Complex.....(541) 957-7010
Holiday Inn Express.....(541) 673-7517

Bed & Breakfast Accommodations

Bell Sister Flats.....(541) 580-6302

Beverages - Wholesale

Bigfoot Beverages /
Pepsi-Cola Bottling of Roseburg.....(541) 679-6751

Blinds

Budget Blinds of Roseburg.....(541) 216-4723

Bowling Alleys

Ten Down Bowling & Entertainment.....(541) 672-3601

Building Contractors/Construction

Victory Builders, Inc.....(541) 679-8696

Building Materials

Gerretsen Building Supply.....(541) 672-2636
Long's Building Supply.....(541) 679-6117

Catering

Douglas County Fairgrounds Complex.....(541) 957-7010

Closet & Garage Organization

Overhead Door Company of Roseburg.....(541) 673-4802

Coffee Kiosks

Dutch Bros. Coffee.....(541) 430-2438

Collection Agencies

CSO Financial.....(541) 673-6661
Southern Oregon Credit Service, Inc.....(541) 464-8414
Valley Credit Service, Inc.....(541) 654-3530

Computer Sales & Service

Megabyte Computer Services.....(541) 957-8970

Concrete/Ready Mix

Knife River Materials.....(541) 679-6744
Umpqua Sand & Gravel.....(541) 673-1088

Consultants - Energy Engineer

Energy Trust of Oregon.....(866) 368-7878

Credit Unions

Cascade Community Credit Union.....(541) 464-6850
First Community Credit Union - East.....(541) 673-6613
First Community Credit Union - West.....(541) 957-9099
Northwest Community Credit Union.....(541) 673-4461
Rogue Credit Union.....(800) 856-7328

Dairy Products

Umpqua Dairy Products Co.....(541) 672-2638

Dentists

Alexis Atchinson, DDS.....(541) 673-0131
Hucrest Family & Implant Dentistry.....(541) 673-6525
Mike H. Lee DDS, PC.....(541) 672-2461
Willamette Dental Group.....(855) 433-6825

Department Stores

Walmart Supercenter.....(541) 957-8550

Dermatologists

Advanced Skin Center.....(541) 672-7546

Doors

Gerretsen Building Supply.....(541) 672-2636

Drug Stores/Pharmacies

Northwest Compounding Pharmacy.....(541) 672-8399

Economic Development Agencies

CCD Business Development Corp.....(541) 672-6728
Southwestern Oregon Workforce
Investment Board (SOWIB).....(541) 863-2897

Electric Companies

Douglas Electric Cooperative.....(541) 673-6616
Pacific Power.....(541) 679-3653

Electric Motors - Sales & Service

HPS Electrical Apparatus.....(541) 673-3162

Electrical Contractors

Olsson Industrial Electric, Inc.....(541) 747-8460
Sims Electric, Inc.....(541) 673-5521

Electronics Manufacturing

Caddock Electronics, Inc.....(541) 496-0700

Employment Services

Cardinal Services, Inc.....(541) 672-8466
Elwood Staffing.....(541) 673-3200
Express Employment Professionals.....(541) 673-3332
Selectemp Employment Services.....(541) 440-4844
WorkSource Douglas Employment Dept.....(541) 464-2352

Engineers - Civil, Environmental, Structural, Soil

Pinnacle Engineering, Inc.....(541) 440-4871

Engineers - Civil, Planning, Site Development

i.e. Engineering, Inc.....(541) 673-0166

Environmental Services

Partnership for the Umpqua Rivers.....(541) 673-5756

Event Facilities - Multi Purpose

Douglas County Fairgrounds Complex.....(541) 957-7010

Event Management & Development

EXPOSURE.....(207) 992-3976

Excavation Contractors

Black Pearl Paving & Excavation.....(541) 784-7990
Cradar Enterprises, Inc.....(541) 673-3268

Feed Dealers

Douglas County Farmers Co-op.....(541) 673-0601

Financial Services

CCD Business Development Corp.....(541) 672-6728
Northwest Farm Credit Services.....(541) 464-6700

Fire & Water Damage Restoration

True North Restoration.....(541) 673-1333

Fire Extinguishers - Sales & Service

Umpqua Valley Fire Services.....(541) 229-0911

Fitness/Athletic Centers

Planet Fitness.....(541) 537-4392

Florists

Long's Flowers.....(541) 673-0929
Wintergreen Nursery, Landscaping,
& Florist.....(541) 679-8224

Foundation Repair

TerraFirma Foundation Systems.....(866) 486-7196

Furniture Sales- New

Ashley Home Store.....(541) 900-1555

Furniture Manufacturing

FCC Commercial Furniture.....(541) 673-3351

Garage Doors/Continuous Gutter

Bunnell's Overhead Door, Inc.....(541) 673-4035
Overhead Door Company of Roseburg.....(541) 673-4802

Garbage & Recycling Services

Roseburg Disposal Company.....(541) 673-7122

Gas Companies

Avista Utilities.....(541) 440-1168

Gas, Pellet & Wood Stoves/ Fireplaces

Fisher's Hearth & Home.....(541) 672-0306

Gasoline/Lubricants - Wholesale & Distribution

Bassett-Hyland Energy Co.....(541) 673-5536
Tyree Oil, Inc.....(541) 673-6215

Glass - Auto, Residential, Commercial

A-1 Auto Glass.....(541) 672-7095
Novus Glass.....(541) 957-9916
Roseburg Glass Company.....(541) 672-2685

Government Agencies - City

City of Roseburg.....(541) 492-6700

Government Agencies - County

Douglas County.....(541) 440-4201
Douglas County District Attorney's Office.....(541) 440-4388
Douglas County Fairgrounds Complex.....(541) 957-7010
Housing Authority of Douglas County.....(541) 673-6548

Government Agencies - Federal

Umpqua National Forest.....(541) 672-6601

Government Agencies - Special Districts

Roseburg Urban Sanitary Authority.....(541) 672-1551

Government Agencies - State

Oregon Department of Transportation.....(541) 957-3500

Grocers - Wholesale

Costco Wholesale.....(541) 378-0020

Grocery Stores/Convenience

Marts

Douglas County Farmers Co-op.....(541) 673-0601
Sherm's Thunderbird #4.....(541) 673-8525

Hardware

Douglas County Farmers Co-op.....(541) 673-0601
Long's Building Supply.....(541) 679-6117

Heating & Air Conditioning Contractors - Systems

Addcox Heating Center.....(541) 672-6473

Hobby Shops

Mac's Tracks Model Railroading.....(541) 440-8942

Home Improvement Centers

Lowes Home Improvement.....(541) 464-3720

Hospitals

CHI Mercy Health.....(541) 673-0611

Housing for the Disabled

Umpqua Homes Incorporated.....(541) 673-2240

Industrial Contractor

Bowers Industrial, Inc.....(541) 672-6246

Industrial Equipment & Supplies

Flury Supply Co., Inc.....(541) 672-3371

Insurance

Farmers Insurance - John Murphy.....(541) 672-4004
Gordon Wood Insurance &
Financial Services, Inc.....(541) 672-4466
Root Family Insurance, LLC.....(541) 673-0113
SAIF.....(541) 857-4200
Umpqua Insurance Agency.....(541) 672-3348

Internet Business Consulting

Kelley Connect.....(541) 214-2650

Internet Service Provider

Douglas Fast Net.....(541) 673-4242

Investment Management & Securities

D. A. Davidson & Co.....(541) 677-7600

Landscape & Irrigation Contractors

Wintergreen Nursery, Landscaping &
Florist.....(541) 679-8224

Lodging

Comfort Inn Roseburg.....(541) 957-1100
Hampton Inn & Suites.....(541) 492-1212
Holiday Inn Express.....(541) 673-7517
Illahee Inn.....(541) 580-2344
Super 8 - Roseburg.....(541) 672-8880

Logging Related Businesses

Lone Rock Resources.....(541) 673-0141

Mailing Services - Shipping/Direct Mail

Package Depot.....(541) 673-0798
The UPS Store.....(541) 672-5699

Manufactured Home Parks/Sales

River Place MHC.....(541) 816-8905

THE ILLAHEE INN

Bill and Michelle Kidd
541 580-2344
170 Wild Thyme Lane, Glide, OR
shelleyk1970@icloud.com

Medical Clinics & Groups

Evergreen Family Medicine.....(541) 677-7200
Family Tree Medical Clinic.....(541) 673-5225
One Peak Medical Clinic.....(541) 464-0780

Mortgage Lending

First Interstate Bank.....(541) 672-7712

Moving & Storage

Roseburg U-Haul Moving & Storage.....(541) 672-6864

Non-Profit Organizations - Educational

Communities for Healthy Forests.....(541) 957-9001

Non-Profit Organizations - Health

Aviva Health.....(541) 672-9596
Hope Clinic For Women.....(541) 672-2609

Non-Profit Organizations - Philanthropic

The Ford Family Foundation.....(541) 957-5574
The Oregon Community Foundation.....(541) 431-7099

Non-Profit Organizations - Professional

Douglas County Association of Realtors.....(541) 672-0563
Douglas Timber Operators.....(541) 672-0757

Non-Profit Organizations - Social Service

Goodwill Industries, Southern Oregon.....(541) 677-0275
United Community Action Network.....(541) 672-3421

Non-Profit Organizations - Youth

Family Development Center.....(541) 673-4354

Nurseries & Garden Centers

Douglas County Farmers Co-op.....(541) 673-0601
Wintergreen Nursery, Landscaping &
Florist.....(541) 679-8224

Office Coffee/Vending

Bigfoot Beverages/
Pepsi-Cola Bottling of Roseburg.....(541) 679-6751

Office Equipment

Kelley Connect.....(541) 214-2650

Office Products/Equipment/ Furniture

Staples, The Office Superstore.....(541) 673-7080

Ophthalmologists

Oregon Eye Consultants.....(541) 687-1927

Outdoor Advertising

Lamar Outdoor Advertising.....(541) 461-0972

Outdoor Power Equipment

Umpqua Valley Tractor.....(541) 672-3369

Outpatient Medical Services - Radiation Oncology

Community Cancer Center.....(541) 673-2267

Payroll Services

Cardinal Services Inc.....(541) 672-8466

Pest Control

Cooper's Pest Control.....(541) 673-0363

Pet Stores/Supplies

Douglas County Farmers Co-op.....(541) 673-0601

Pharmaceuticals - Nutraceuticals

Marco Pharma International, LLC.....(541) 677-8300

Physicians & Surgeons

Family Tree Medical Clinic.....(541) 673-5225

Printers - Commercial

Graphic Dimensions, Inc.....(541) 672-3812

Property Managers

Frontier Village.....(541) 672-3919

Pump Service/Sales/Supplies

Tinker's Pump Service, Inc.....(541) 440-2323

Railroads

Central Oregon & Pacific Railroad.....(541) 941-3709

Ranches & Farms

Elin Miller Consulting, LLC.....(541) 459-4488
Heard Family, LLC.....(541) 459-7529

Real Estate - Commercial & Residential

All-Pro Realty Advisors.....(541) 696-1600

Real Estate - Mortgage Loan Brokers

American Home Lending, LLC.....(541) 957-7777

Recreational Vehicle Parks

Rising River RV Park.....(541) 679-7256

Recreational Vehicle Sales, Service, Parts & Accessories

Oregon Coach Crafters & RV.....(541) 229-4678

Residential Care Facility - Licensed

Riverview Terrace.....(541) 672-2500

Resorts

Steamboat Inn.....(541) 498-2230

Restaurants

Abby's Legendary Pizza.....(541) 672-1184
Chi's Garden Restaurant.....(541) 464-8395
McDonald's Restaurant/M-D Sanders
Restaurants.....(541) 672-8105
McMenamins Roseburg Station
Pub & Brewery.....(541) 672-1934
Subway - Subway on the Parkway, Inc.....(541) 673-2663

Retirement Communities

Linus Oakes Village, CHI Living Communities..(541) 677-4800
Meadow Creek Retirement Community.....(541) 464-8405
Oak Grove Retirement Center.....(541) 673-3836
Riverview Terrace.....(541) 672-2500

Rock Quarry

Umpqua Sand & Gravel.....(541) 673-1088

Rock Sales / Products

Knife River Materials.....(541) 679-6744

Sand & Gravel

Knife River Materials.....(541) 679-6744
Umpqua Sand & Gravel.....(541) 673-1088

Schools

Phoenix School of Roseburg.....(541) 673-3036
Roseburg Public Schools.....(541) 440-4014
Umpqua Community College.....(541) 440-4600

Scrap Metal

McGovern Metals Company, Inc.....(541) 679-7012

Service Stations

Douglas County Farmers Co-op.....(541) 673-0601

Steel Distributors & Warehouses

McGovern Metals Company, Inc.....(541) 679-7012

Steel Manufacturing

Con-Vey.....(541) 672-5506

Surveying

i.e. Engineering, Inc.....(541) 673-0166
Land Mark Surveying, Inc.....(541) 677-9400

Tanning Salons

Makena Beach Tan.....(541) 677-7264

Telecommunications - Equipment & Systems/Service

Valley Tel Service, Inc.....(541) 673-6030

Television Stations

K E Z I 9 News.....(541) 580-7447
K M T R NewSource 16.....(541) 746-1600
K P I C - TV.....(541) 672-4481

Theatres - Movies

Roseburg Cinemas.....(541) 440-2280

Tire Dealers

Big O Tires of Roseburg.....(541) 672-2848
Industrial Tire, Inc.....(541) 679-6333

Title & Escrow Companies

AmeriTitle, Inc.....(541) 672-6651
First American Title Insurance Company.....(541) 672-5555
Western Title & Escrow.....(541) 672-3388

Tools, Equipment, Machinery Sales

Oregon Tool & Supply.....(541) 672-1935

Towing

Joe's Towing & Recovery, LLC.....(541) 672-4388

Trailer Manufacturing - Custom

Whit-Log, Inc.....(541) 673-1166

Transportation - Log Hauling

Ireland Brothers.....(541) 863-5241

Travel Stops

Love's Travel Stops & Country Store.....(541) 679-1916

Truck & Bus Repair-Parts/Service

Whit-Log, Inc.....(541) 673-1166

Trucking - Wood Chip Hauling

Terrain Tamers Chip Hauling, Inc.....(541) 673-7019

Urgent Care Clinics

Evergreen Family Medicine.....(541) 677-7200
Best Med Clinics.....(541) 672-4789

Vocational Rehabilitation Services

Sunrise Enterprises, Inc.....(541) 673-0195

Water - Bottled

Crystal Falls.....(541) 672-0799

Welding/Fabrication

Bentley Welding.....(541) 679-7849

Window Coverings

Overhead Door Company of Roseburg.....(541) 673-4802

Windows

Gerretsen Building Supply.....(541) 672-2636

Wineries & Vineyards

Girardet.....(541) 679-7252
Reustle - Prayer Rock Vineyards.....(541) 459-6060

Women's Clinic

Evergreen Family Medicine.....(541) 677-7200

Wood Products Manufacturing

Keller Lumber Company.....(541) 672-6528
Roseburg Forest Products.....(541) 679-3311
Swanson Group, Inc.....(541) 832-1121

Zoo/Wildlife Park

Wildlife Safari.....(541) 679-6761

The Roseburg Area Chamber of Commerce would like to thank our member advertisers.

You make this annual publication possible and help further the chamber's efforts to promote our community and our local businesses. The continued support of our membership is greatly appreciated.

ADVERTISERS INDEX

Caddock Electronics	25
Cardinal Services, Inc.....	30
Douglas County Farmers Co-Op.....	30
Evergreen Family Medicine.....	34
Hampton Inn & Suites of Roseburg.....	29
The Illahee Inn	32
The Oregon Community Foundation	inside back cover
Roseburg Chamber of Commerce & Visitor Center.....	inside front cover

In addition to our advertising members, please be sure and check out all our members with "bold listings," throughout the directory, our generous member sponsors and our FiveStar chamber members. These Roseburg Area Chamber of Commerce members provided incredible support to the chamber and its programs.

EVERGREEN FAMILY MEDICINE

Growing with the needs of our community. We want you to feel well cared for and welcomed!

Evergreen was born of a desire to provide access to primary care for all of Douglas County.

We strive for the mutual trust and respect that is the hallmark of a healthy relationship between a family and their medical care provider.



At Evergreen Family Medicine, our family cares for your family

www.evergreenfamilymedicine.com

541-677-7200

2021-22 PROGRAM SPONSORS

A member benefit is that revenue generated from chamber programs and events helps cover annual operating costs and keep membership dues reasonable. The ability to generate this revenue is due in large part to our many members and their support of chamber programs.

In "normal" years, can't say "thank you" enough to our members who sponsor programs and events, contribute their time, donate their products, services or funds and take part in these chamber programs and activities. Under the extreme circumstances experienced in 2020, 2021 and 2022 due to the pandemic and needing to move in-person programs to virtual, there are just no words for our amazing members whose support continued. Thank you for helping keep the Roseburg Area Chamber of Commerce financially sound and affording the chamber the opportunity to serve Douglas County businesses with effectiveness and significance.



PROJECT LEADERSHIP ROSEBURG

Building a strong local economy and fostering community spirit are not easy tasks. So, the Roseburg Area Chamber of Commerce set out to train the kind of strong, local business leaders it takes to get the job done.

Project Leadership strives to involve community-spirited people in promoting business awareness and volunteer leadership. Beginning each September, participants explore the key industries that drive our economy through eight, day-long seminars and workshops that combine an overview of the Roseburg area with leadership and team-building training. Project Leadership has served more than 650 of our community's business people in the past 33 years.

Due to the COVID-19 pandemic and related closures and restrictions on local businesses, there was no 2020-21 Project Leadership program. Fortunately, the Roseburg Area Chamber of Commerce brought its distinguished leadership program back, fully in-person, in September of 2021 with its 2021-22 class. This 32nd class of future community leaders graduated in June of 2022.

2022 MEMBERSHIP MEETING LUNCHEONS

Avista Utilities

CSO Financial, Inc.

Douglas Timber Operators

Pacific Power

Rogue Credit Union

ECONOMIC FORECAST 2023

Bowers Industrial, Inc.

Cardinal Services, Inc.

Con-Vey

Gordon Wood Insurance

Lone Rock Resources

Marco Pharma International LLC

Roseburg Forest Products

Tyree Oil

Umpqua Insurance Agency

PROJECT LEADERSHIP 2021-2022

Aviva Health

Cardinal Services, Inc.

Douglas County

Douglas Fast Net

FCC Commercial Furniture

Lone Rock Resources

Roseburg Forest Products

Southern Oregon Credit Service

POPULATION

With a population of 24,915 people and an urban growth area that includes more than 60,000, Roseburg ranks 24th in size among Oregon's 242 cities. It is the seat of Douglas County, ranked #9 among counties in Oregon, which is home to approximately 112,530.

DEMOGRAPHICS

DOUGLAS COUNTY TOTAL POPULATION 112,530
(based on 2020 US Census)

ETHNIC DIVERSITY

White	87.5%
Hispanic or Latino	6.1%
American Indian/Alaskan Native	2.1%
Asian	1.1%
Black or African American	.5%
All other races	2.7%

GENERAL AGE DISTRIBUTION

0-9: 11,253	50-59: 13,504
10-19: 12,378	60-69: 19,130
20-29: 11,253	70-79: 12,378
30-39: 12,378	80+: 7,877
40-49: 12,379	

EDUCATION

ROSEBURG PUBLIC SCHOOLS, DISTRICT #4

Serving nearly 6,000 K-12 students on 13 campuses, including eight elementary, two middle, Roseburg High and Mt. Nebo Alternative and Phoenix Charter schools.

UMPQUA COMMUNITY COLLEGE

This two-year, public institution serves about 15,000 students annually, offering adult basic instruction, technical and vocational programs, self-enrichment classes, liberal arts studies and pre-professional courses. Answering the needs of, and working in partnership with, the local business community, UCC initiated several important programs, including viticulture (grape growing) and enology (wine making) in the form of SOWI--Southern Oregon Wine Institute, truck driving, medical coding and paralegal studies.

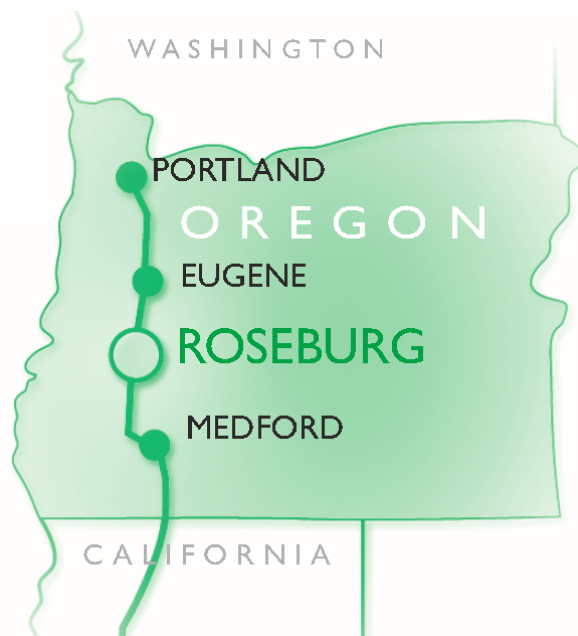
Additionally, a number of private schools and programs offer preschool, basic, religious, vocational, arts and specialty instruction to students of all ages.

Chamber members include:

PHOENIX SCHOOL OF ROSEBURG
ROSEBURG PUBLIC SCHOOLS
UMPQUA COMMUNITY COLLEGE

LOCATION

Roseburg is located on Interstate 5 in Southern Oregon's scenic Douglas County. The city is nestled in a lush, forested region known as the Land of Umpqua. Roseburg is 67 miles south of Eugene, Oregon's third-largest city, and 123 miles north of the California border. Portland, the state's largest city, is 175 miles to the north. The Pacific Coast lies only 80 miles to the west. To the east, along the breathtaking North Umpqua Scenic Highway, lie Diamond Lake (79 miles) and Crater Lake National Park (99 miles).



CLIMATE

At an elevation of 465 feet, Roseburg defines the word temperate. Sunny days are common, and extremes of any weather condition are rare. Low and high temperatures range from between 34 and 48 degrees in January, 39 and 63 in April, 53 and 84 in July, and 43 and 67 in October. Snowfall on the valley floor is unusual, and summer humidity is very low. The average annual rainfall is approximately 33 inches.



HEALTH CARE

A wide array of high-quality healthcare services and professionals are available to residents of the Roseburg area.

CHI MERCY HEALTH MERCY MEDICAL CENTER

Founded in 1909, Mercy Medical Center, is Douglas County's original hospital and today is one of the region's largest employers. More than 1,000 people comprise the Mercy staff offering residents of the area local access to comprehensive and state-of-the-art medical services. This includes the Shaw Heart and Vascular Center, a regional resource for preventive, diagnostic, therapeutic and rehabilitative care for conditions of the heart and blood vessels.

VA ROSEBURG HEALTHCARE SYSTEM

The VA Roseburg Healthcare System (VARHS) includes a Veterans Health Administration facility and four community based outpatient clinics. VARHS offers primary care and hospital services in medicine, surgery and mental health for the 62,000 veterans who reside in Central and Southern Oregon.

COMMUNITY CANCER CENTER

Located on the campus of Mercy Medical Center, the Community Cancer Center has provided comprehensive services to cancer patients throughout the region for more than 30 years. Steelhead Specialty Group, PC is a medical oncology office that specializes in quality care for cancer and blood disorder patients.

AVIVA HEALTH

Aviva Health, formerly Umpqua Community Health Clinic, provides high-quality and affordable medical and dental services for both uninsured and insured people of all ages.

URGENT CARE / MEDICAL CLINICS

Roseburg has several urgent care and medical clinic facilities including: Best Med Clinics, Evergreen Family Medicine and Family Tree Medical Clinic. Check out our physicians and specialty doctors in the business listings starting on page 24.



GOVERNMENT

The city of Roseburg follows a mayor/city manager form of government, with the mayor presiding over a council of eight elected citizens, who represent four wards. Roseburg is the seat of Douglas County government, which is led by an elected board of three paid commissioners. Both the city and county are firmly committed to providing open, participatory government that is held accountable to citizens.

FEDERAL

Senators: Jeff Merkley, D; Ron Wyden, D
Representative: Peter DeFazio, D

STATE

Governor: Kate Brown, D
Senators: Dallas Heard, R; Floyd Prozanski, D
Representatives: David Brock-Smith, R; Cedric Hayden, R; Christine Goodwin, R

DOUGLAS COUNTY

1036 SE Douglas, Roseburg, OR 97470
(541) 672-3311
Commissioners: Chris Boice, Tim Freeman, and Tom Kress

CITY OF ROSEBURG

900 SE Douglas, Roseburg, OR 97470
(541) 492-6700

Mayor: Larry Rich

Councilors:

Kylee Rummel,
Ward 1, Position 1

Sheri Moothart,
Ward 1, Position 2

Shelley Briggs-Loosley,
Ward 2, Position 1

Andrea Zielinski,
Ward 2, Position 2

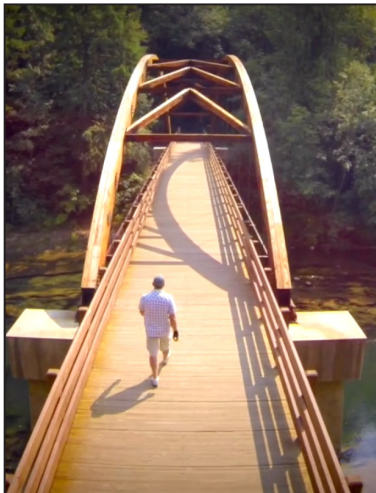
Bob Cotterell,
Ward 3, Position 1

Brian Prawitz,
Ward 3, Position 2

Beverly Cole,
Ward 4, Position 1

Patrice Sipos,
Ward 4, Position 2





TRANSPORTATION

ROSEBURG REGIONAL AIRPORT

(541) 673-4722

Private charters and air freight.

MAHLON SWEET FIELD – EUGENE AIRPORT

(541) 682-5430

(82 miles north)

Alaska Airlines, Allegiant Air, American Airlines, Avelo Airlines, Delta Air Lines, Southwest Airlines and United Airlines

ROGUE VALLEY INTERNATIONAL – MEDFORD AIRPORT

(541) 776-7222

(94 miles south)

Alaska Airlines, Allegiant Air, American Airlines, Delta Air Lines, United Airlines

UMPQUA TRANSIT

(541) 440-6500

Public, senior, and disabled persons bus service, Monday through Friday.

CENTRAL OREGON & PACIFIC RAILROAD

(541) 941-3709

Freight service.

AMTRAK

433 Willamette St., Eugene

(800) 872-7245 or 1-800-USA-RAIL

www.Amtrak.com

Passenger rail service available departing from Eugene.

HOUSING

Roseburg offers a diversity of housing opportunities from modern subdivisions and well-established neighborhoods to spacious country living just minutes from city amenities.

REAL ESTATE NUMBERS

Average home sale price: \$362,000

Average number of days on market: 34

Average property tax rate: \$9.33 per \$1,000 of real market value.

MEDIA

TELEVISION STATIONS INCLUDE:

KEZI TV — ABC, Eugene, Roseburg

KLSR TV — FOX, Eugene

KOBI TV — NBC, Medford

KMTR TV — NBC, Eugene

KPIC TV — CBS, Roseburg

KSYS TV — Public Television, Medford

NEWSPAPER:

(541) 672-3321

The News-Review — daily, except Monday

RADIO STATIONS INCLUDE:

KGRV 700 AM — Christian

KKMX Sam 104.5 FM — Adult hits

KQEN 1240 AM — News/Talk/sports

KRSB 103.1 FM — Country

KSKR i101 FM — Top 40

KSKR 1490 AM — Sports

BANKS & FINANCIAL INSTITUTIONS

Roseburg and Douglas County is served by a number of national and community banking institutions and credit unions with personal assistance during business hours as well as conveniently located 24-hour ATM's.

BANKS/CREDIT UNIONS INCLUDE:

Cascade Community Credit Union

First Community Credit Union--East

First Community Credit Union--West

First Interstate Bank

Northwest Community Credit Union

Oregon Pacific Bank

Pacific Cascade Federal Credit Union

Rogue Credit Union

Umpqua Bank

SEE PAGES 31-34 FOR A
DIRECTORY OF BUSINESSES
BY CATEGORY



A rich history led to the development of Roseburg as the Douglas County seat and the center for recreation, shopping and culture in the region. From the Native Americans who first inhabited the lands to the growth of the region during the gold rush, the Land of Umpqua continues to prove its worth.

Long before European settlers arrived, the Cow Creek band of the Umpqua Tribe of Indians inhabited the region. Hunting for elk and deer, and fishing for salmon and steelhead was vital to their sustenance. They also gathered abundantly available berries, nuts and vegetables. Goods were traded with other tribes, east as far as Crater Lake and as far north as the Columbia River.

What long was part of the traditional hunting and fishing grounds for the Cow Creek Band of Umpqua Tribe of Indians began to change in 1846 when settlers began to flood into the region via the newly established Applegate Trail. Jesse Applegate and Levi Scott blazed this southern route of the Oregon Trail as a safer route than floating down the Columbia River. The trail went through the heart of downtown Roseburg and its main street follows the same route today.

The arrival of New Yorker Aaron Rose and his family in 1851 coincided with the establishment of Umpqua County. The discovery of gold in 1852, rapid growth of the region and mining led to tension between the native people and the new inhabitants. A wild downtown and tragic warring between European settlers and native peoples followed for the next decade.

Due to increased population, Umpqua County divided and the portion east of the Coast Range became known as Douglas County—named for US Senator Stephen A. Douglas of Illinois who was a congressional advocate for Oregon statehood. When the mining boom faded in 1962, Umpqua County was absorbed into Douglas County. Douglas County has a total of 5,134 square miles and is larger than some states.

Progress came in 1872, the year the town was incorporated, when the Oregon & California Railroad arrived. New faces and goods fostered fast growth and the establishment of Roseburg as a hub.

Agriculture and trade flourished, and fine homes and city services soon emerged. Trains not only brought new people to the area but also created an opportunity for the development of the local timber industry. With 1.8 million acres of commercial forest and one of the oldest stands of old growth timber in the world, Douglas County is the leader in timber production.

Today, the timber and wood products industry remains a strong staple in Roseburg's economic fabric. A diverse economy that embraces timber, agriculture, manufacturing, hospitality, medical, and telecom industries. Revitalization and business expansion continues today. The redevelopment of historic downtown and the waterfront is ongoing. The chamber is advancing a growing tourism sector, attracting new business and industries and planning ahead for a bright future.

In the early morning hours of August 7, 1959, a fire at a Roseburg building supply facility ignited a parked truck filled with dynamite and ammonium nitrate. The rest is history—in the Roseburg area at least.

The Blast of 1959 changed the landscape of Roseburg's charming downtown district. Fourteen people died in the massive explosion, and many others were injured. It leveled 12 city blocks and damaged 300 businesses within a 30-block radius of its epicenter, marked by a crater 52 feet wide and 12 feet deep, causing an estimated \$12 million in damage. It was such a large explosion, it even made international news on the BBC. Today a plaque marks this spot, which is less than two blocks away from the Roseburg Area Chamber of Commerce & Visitor Center.

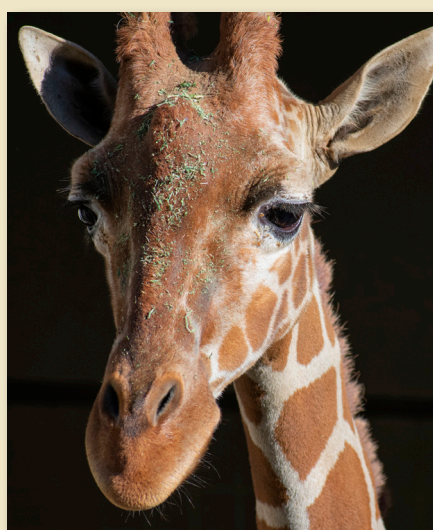




Oregon Coast



Wildlife Safari

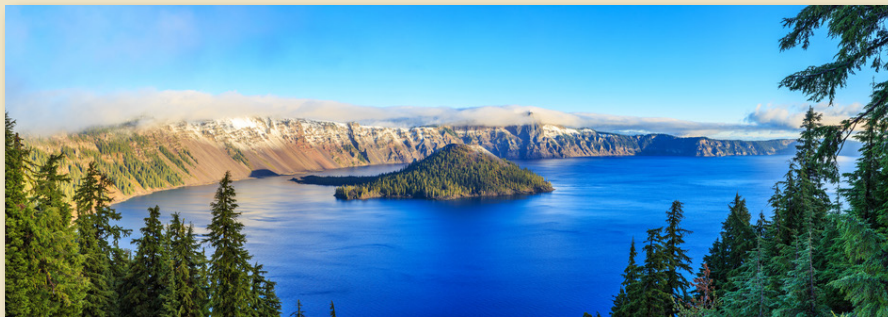


LAND OF UMPQUA SELF-GUIDED TOUR MAP

Clearwater Falls

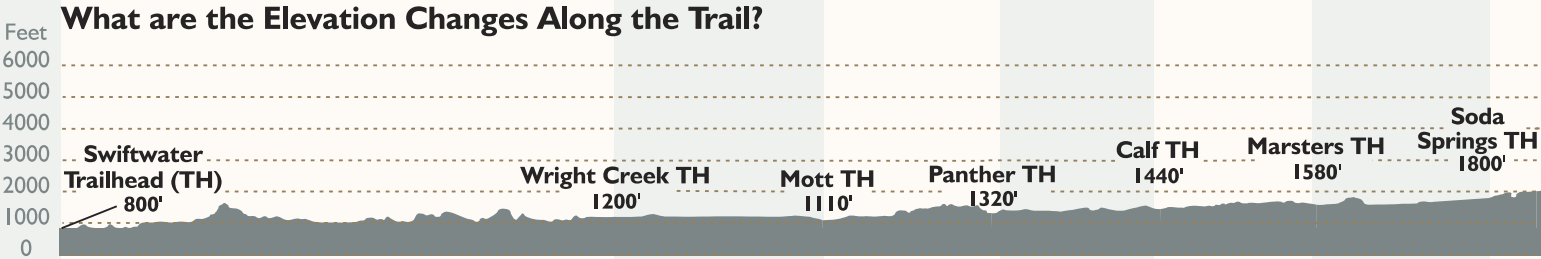
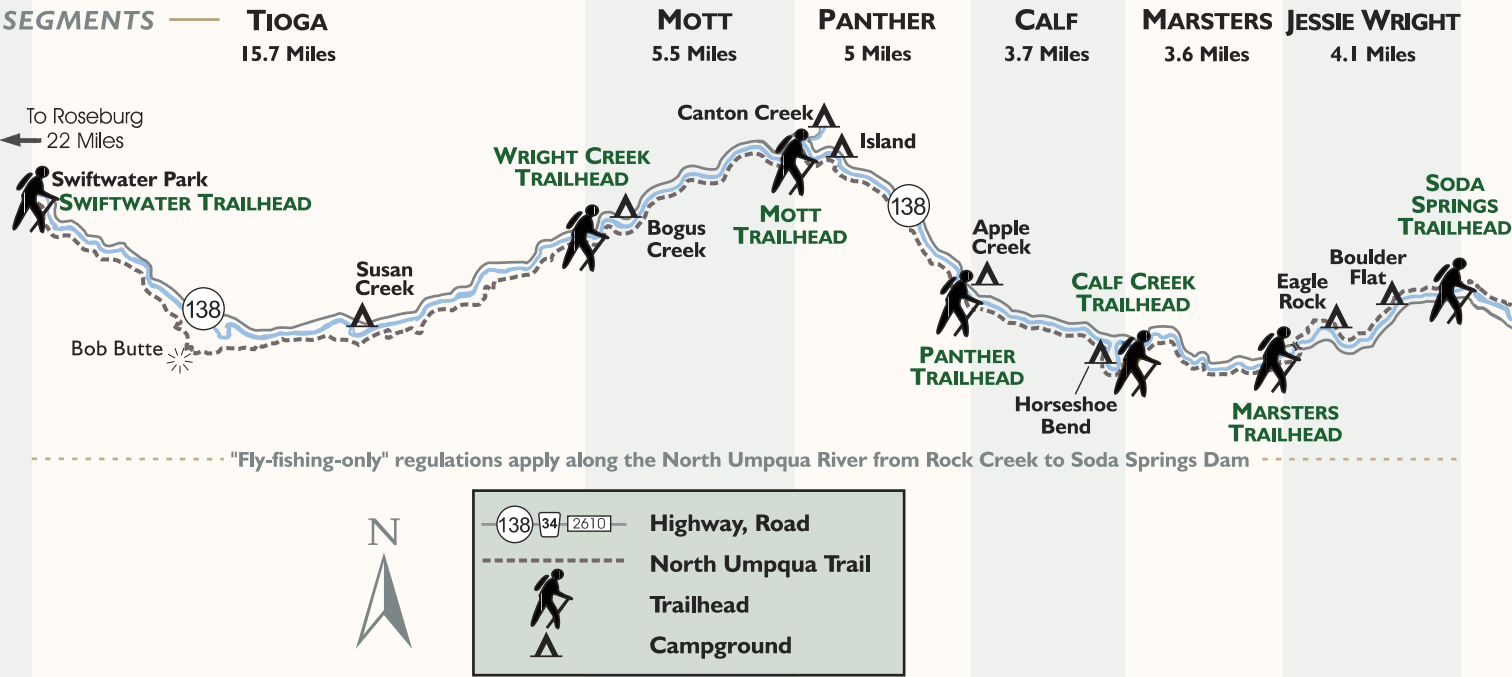


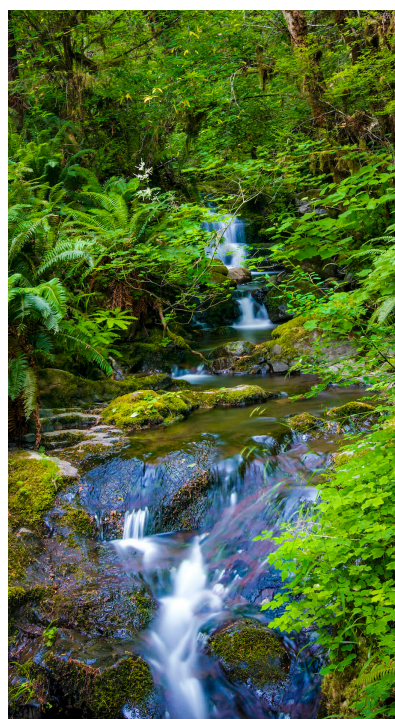
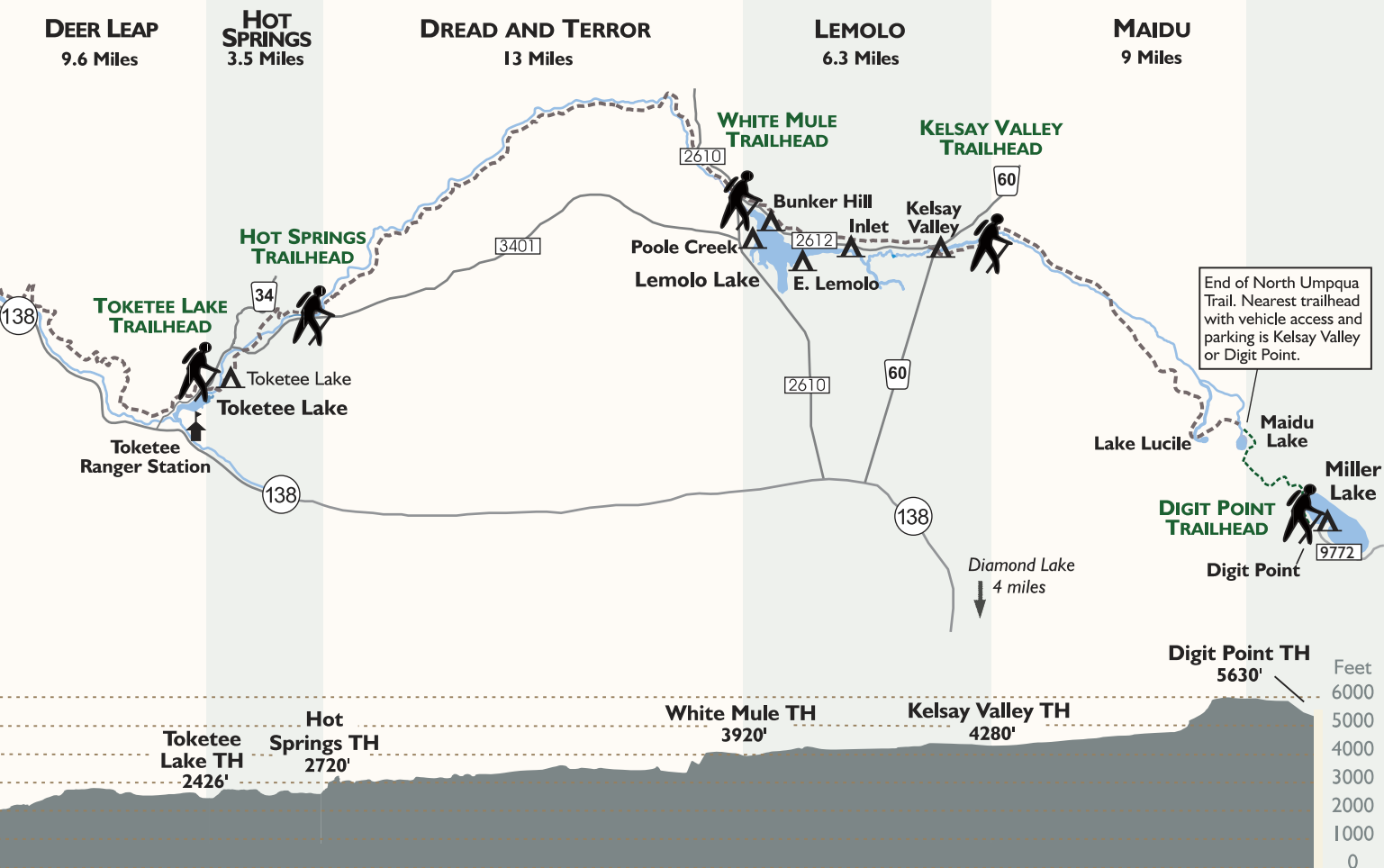
Crater Lake



**For a free visitor guide call (541) 672-2648
or go to www.roseburgchamber.com**

NORTH UMPQUA TRAIL





BLM & USFS

OUTDOOR ADVENTURES

Thundering Waters
Umpqua National Forest and Rangeland District BLM

North Umpqua Trail
Umpqua National Forest
Harrington District
Bureau of Land Management

North Umpqua
WILD AND SCENIC RIVER
USERS GUIDE

Rogue-Umpqua
Scenic Byway
OREGON

These brochures are on the web at www.blm.gov/or/districts/roseburg/recreation/inter-brochures.php

Roseburg Bureau of Land Management

- Fish in the clear waters of the Oregon Cascades.
- Hike one-mile to the scenic Susan Creek or Wolf Creek Waterfalls.
- Raft the North Umpqua Wild and Scenic River. Outfitter Guides are available on request.
- Explore the Cow Creek Back Country Byway.
- Enjoy one of BLM's nine forested campgrounds.

www.blm.gov/or/districts/roseburg/recreation
 541.440.4930

Umpqua National Forest

- Stay overnight in one of our 45 campgrounds or fire lookouts
- Hike a mountain trail
- Explore the 172 mile Rogue-Umpqua National Scenic Byway
- Experience waterfalls, mountain lakes and rivers
- Try the world-class fisheries of our lakes and rivers
- Immerse yourself in Wilderness

www.fs.fed.us/r6/umpqua
 541.672.6601



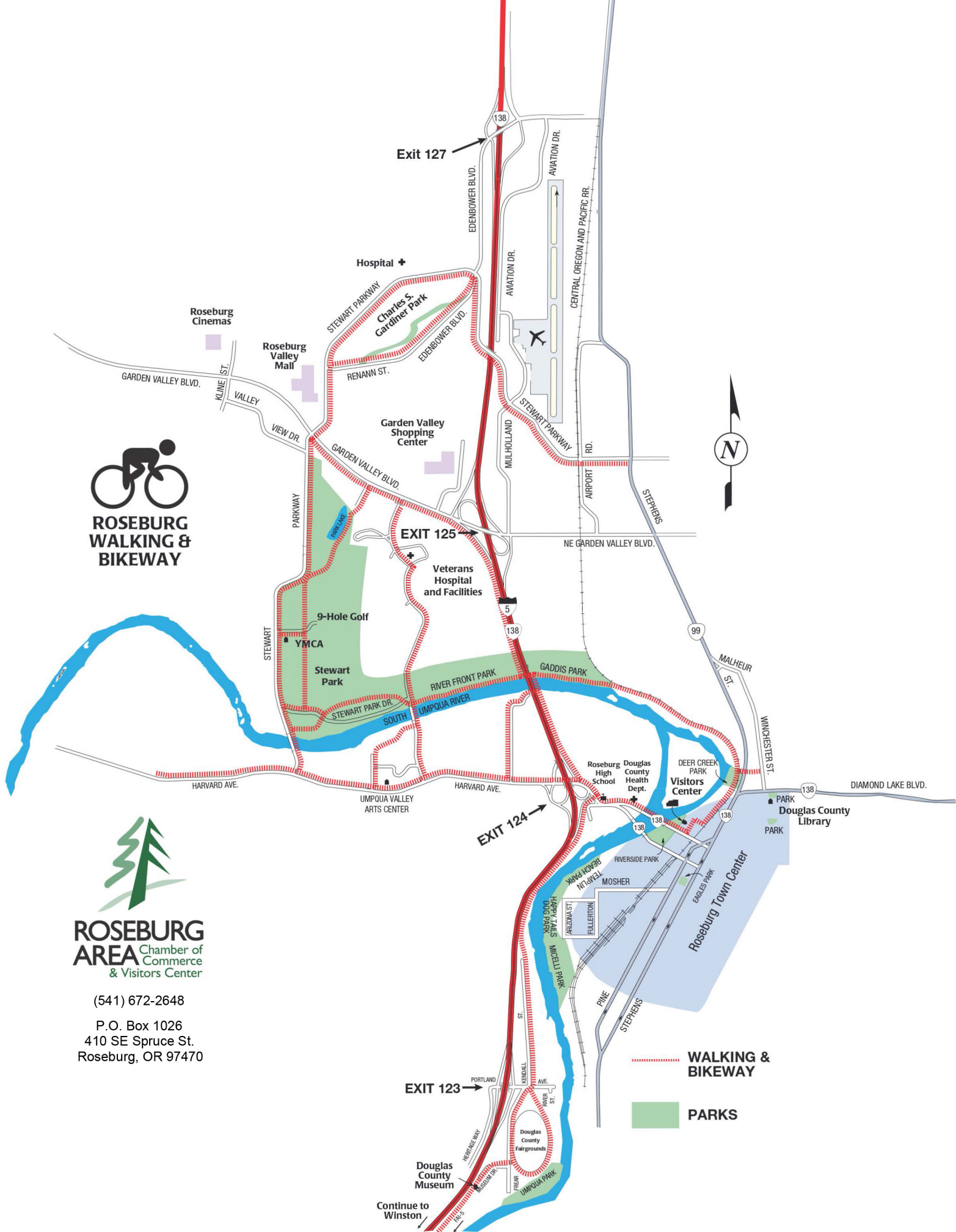
ROSEBURG WALKING & BIKEWAY



**ROSEBURG
AREA** Chamber of
Commerce
& Visitors Center

(541) 672-2648

P.O. Box 1026
410 SE Spruce St.
Roseburg, OR 97470





NeighbORly

[INSPIRING KINDNESS ACROSS OREGON]



Delivering food, checking on neighbors and standing strong together elevated the practice of kindness across Oregon. Now we have the opportunity to keep kindness at the forefront of our lives, to reach out, to share, to give our time, treasure and talent, to rise and thrive together. **Kindness inspires kindness.** Let's keep it rolling. Visit oregoncf.org/neighborly to learn, connect and get inspired.

Oregon
Community
Foundation

